

NEWSLETTER

APRIL 2016

A Publication from Portobello Community Incorporated. www.portobello.org.nz

Portobello Community Inc.



ANZAC Day



this year will be held at the Museum grounds in Portobello
at 9.30am on Monday 25 April.

The service will be followed by morning tea in the Old Barn at the Museum.

As this is a community event we would appreciate help with the morning tea
(you will still be able to attend the service) so please get in touch with Portobello Community Inc if
you are willing to help. Phone Christine on 4780 878

If anyone in the community is willing to provide a plate
for morning tea then this is also much appreciated.

This can be dropped off at the Museum Barn before the service.

We would like to encourage local community groups to be part of the service by laying a wreath on
behalf of their group. Wreaths will be available to decorate.

See the staff at the Portobello Store if you want one.

Your group may want to lay a bunch of flowers instead.

This year is the 100th anniversary of the Western Front battles
in Northern France and Belgium.

There will be some seating available for our senior citizens and also
a gazebo to sit under if the weather is wet.

The service will be on whatever the weather of course so please come prepared.

Thank You Portobello Inc and the Otago Peninsula Museum & Historical Society.



Chairman's Chat

The Hawk & Hurl has become a regular event on the Peninsula calendar that we have undertaken to coincide with the Dunedin City Council's skip day at Portobello Domain. Portobello Community Inc. has used the Hawk and Hurl to raise money for the school pool, toy library and other things for our community. At the recent Keep Dunedin Beautiful Awards Portobello Community Incorporated received an award for its rubbish clean-ups and the Hawk and Hurl event. This is a great compliment for the community and something that everyone should be justifiably proud. I'd particularly like to thank Dave Fenwick who began the Hawk & Hurl concept and the rest of the Portobello Community team who put in the hard work to make it happen.

Paul Pope – Chairman Portobello Community Incorporated



April 2016

TĒNĀ KOUTOU KATOĀ - Warm greetings to everyone

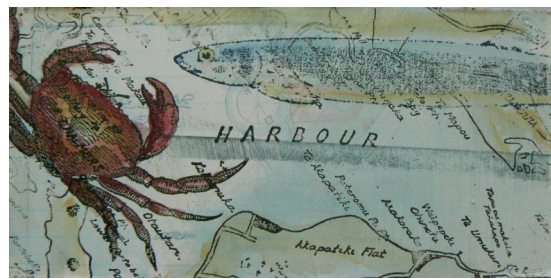
30 Harington Point Road
Portobello
Dunedin 9014
478 0605

office@portobello.school.nz
www.portobello.school.nz

One of our Term 1 Highlights

We were the feature school for Walk 'n' Wheel Week. Our tamariki welcomed the mayor, a Police Education Officer, More FM, staff from Sport Otago and Strider the mascot to our school. It was a beautiful morning and we all walked to school from Coronation Hall. We had several spot prizes from Sport Otago and one of our children won a voucher for a sports shop.

More photos: <http://whatsupatportobello.blogspot.co.nz/>





Possums, possums

www.pestfreepeninsula.org.nz

Has it seemed as if possums have been turning up everywhere over these last couple of months?

Indeed, the population is now highly fragmented and disrupted across the whole Peninsula. The possums still left are moving around a lot trying to regroup. Their numbers have not increased - we are simply seeing them because they are moving. Five breeding-aged females have been trapped since January *without* carrying joeys. This is the start of a highly significant pattern emerging in our records. It shows that all of our control efforts are having an impact on possum mating. This is what we're after, stopping recruitment as well as culling survivors.

Can you help us with:

1. Returning any yellow-boxed Timms traps that you're not using at the moment so we can put them to good use elsewhere.
2. Donating an old chest freezer?
3. Being a volunteer trapper who follows up on possum sightings in the Portobello area.

Contact: Cathy Ph. **0274 919293** or **478 0996** or email **opbg11@gmail.com**



Take a walk on the wild side this April. Wild Dunedin is a chance for everyone to discover and explore the city's natural places, from the high lands to the high seas (ki uta ki tai).

Dunedin is New Zealand's wildlife capital, with a myriad of activities and events celebrating nature and conservation. Festival organisers would like locals and visitors to join them and celebrate our beautiful coastline, night skies and incredible wildlife.

Starts on International Earth Day, Friday 22nd April, and continues over the Anzac weekend. A broad variety of activities are planned catering for all ages. From flying a kite, walks and talks, train trip, open days, displays, conservation events and getting up close to wildlife. Festival deals are being offered by local nature tours and attractions.

A fully detailed programme is available on the website www.wilddunedin.nz



Save The Otago Peninsula, more commonly known by its acronym, STOP, has an ambitious planting plan for winter 2016 and in June there will be Planting Working Bees every Sunday (5th, 12th, 19th and 26th) from 10am to 1pm.

Meet at the far end of Bacon St that goes off Portobello Road from Turnbells Bay.

Regular working bees are held each Tuesday and Thursday morning from 9.30am to 12.30pm, on different sites.

If you can't make it to working bees, consider funding some trees and their maintenance at \$10each.

Contact person: Lala Frazer lala.frazer@gmail.com Phone 478 0339 or text 022 437 0799 before 21 April or text only (no calls) to 027 875 6020 after 22 April.

Peninsula Property Focus

with Allan Hamilton
your local agent.

Harcourts



Did you see the article on TV3 news about the Dunedin property market? It seems the secret is out, and the rest of New Zealand is taking a close look at our neck of the woods. And who can blame them?

We have some of the best schooling in the country, growth in IT and web based businesses, and an enviable lifestyle without the traffic jams of Auckland!

From an investors point of view we have a range of property options offering solid returns, and for those looking to relocate their family we have quality homes at much more affordable prices than other main centres.

There was further commentary this week that we may see interest rates drop even lower. This combined with the growing interest in our region can only mean one thing. Continued pressure on house prices that will see our median value rise further over the next 12 months. Good times for home owners in Dunedin!

Kind Regards, Allan.

Our Local Peninsula Market

I'm going to keep you up to date with sales on the Peninsula. For the purpose of these statistics I am looking at sales from MacAndrew Bay to the end of the Peninsula. These are the sales to date for 2016.

21 Sales in Total. 19 Freehold homes - median value \$377,300

Plus 1 townhouse on cross-lease title, and 1 section.

For more detailed information about any of these recent sales please contact me.



It was a pleasure to complete the sale of this elevated 903 sqm section at 32 Clearwater Street in Broad Bay.



Just listed by my Harcourts colleague Tania Porteous is this 2,428 sqm parcel of land across 2 titles in Broad Bay.

For more information and help with your next real estate move
Phone Allan 0274 555 353 email: allan.hamilton@harcourts.co.nz

PORTOBELLO BROAD BAY PLAYGROUP



Portobello Broad Bay Playgroup is open on Monday and Wednesday from 9:00 until 12:00. We are a Peninsula wide community and are a relaxed place for mums and dads to have a coffee and a chat while their children play. Children can be enrolled from 0 to 6 years old. We set up activities for each session and there is always something fun and messy for little hands. We are based in a lovely spacious old villa that is large enough for running around on rainy Dunedin days, and have a beautiful playground for when the sun is shining.



Drop in and say hello, we are located by the Portobello School, or look up our facebook group; Peninsula Playgroup.

The Otago Harbour Ferry Incorporated, owner of the restored vintage launch Elsie Evans is looking for a secretary. This is a voluntary 2-3 hour a month position. It is an exciting time to join the crew as we expect to have the ferry working later this year.

Contact by email to sutherlandshem@gmail.com or phone 0211568677.

For more info and pics visit our facebook page, elsie evans
Regards Shem Sutherland





Pilates Classes

with Penny
Portobello Coronation Hall
Mondays 6-7pm
Everyone welcome



Fully qualified and experienced instructor
Stretch, strengthen and lengthen your whole body
Improves posture
Can assist with healing and preventing injuries and pain
Relaxing for body and mind
My classes are varied, challenging and fun
Soothing music & fun Pilates equipment provided free of charge

Feel free to contact me for information, or just turn up
(please arrive 10 mins early on your first class to go over the basics)

Penny 0274 649180
Email: pennykershaw@gmail.com

What is happening at the Portobello Marine Lab?

Over the summer we had a stream of enquiries about what time the Aquarium was open. People were unaware that we were closed to the public, and have been for three years now! During those three years we have continued to run our usual school education programmes and some public events, but no-one was certain what the future held for the facility at Portobello.

We are about to undergo some extensive work, so I thought I'd update you on what has been happening here in recent months and what the plan is for the future ... as far as we know.

The Portobello Marine Lab has undergone extensive refitting to improve the facilities for our staff and students, and more work is planned to cope with the growing demand for marine science research.

The NZ Marine Studies Centre has had some extra aquarium tanks installed and has been refurbished to allow us to continue to run our education programmes.

The old Aquarium building that held the famous "touch tanks" and our old teaching lab is going to be demolished very soon. That was the building that was deemed unsafe as the concrete was cracking.

There is no plan to rebuild the public aquarium on this site. A temporary building is going to be erected in its place which will contain further teaching and research space. This work should be completed by the end of the year.

Whilst the demolition and rebuilding work is going on, we may have to restrict access to the wharf area. The wharf has always been popular with local fishing enthusiasts, but they will have to find somewhere else to cast their lines for a while.

There have been many rumours about a new aquarium being built in town. The University will certainly be looking at plans to rehouse the Marine Science Department in the future, but it is in their long-term plan and that may be over ten years' away. The improvements here at Portobello are to tide us over until then.

In the meantime, although we do not have a public aquarium, school children still get to visit our marine animals when they participate in school programmes at the NZ Marine Studies Centre. The programmes vary from a couple of hours to several days in duration. We are visited by many local schools, but we have classes from as far afield as Christchurch,



Queenstown and Invercargill who come to us regularly and stay overnight on Quarantine Island or at the local motor camps. We also have an educator based in Nelson who runs programmes in that region.

We are happy to adapt our programmes for adult groups too, so if you are a member of a club or organisation that is looking for something a bit different, why not check us out? You could find out about adaptations for eating and surviving being eaten in the ocean, feed plankton to our seahorses and pipefish, dissect a shark, and then end up in Portobello village for fish and chips! See our website: www.marine.ac.nz for programme ideas and to check out our resources.

Buying or selling?

Talk to Terry Fogarty,
your number one choice
on the Peninsula.

Terry Fogarty

Property Consultant

p (03) 470 2553

m 021 0293 8182

e terryf@edinburgh.co.nz



Edinburgh
Realty

LTD MREINZ

Licensed under the Real Estate Agents Act 2008



Clare CURRAN

Peninsula clinic



Held in Clare's Caravan

Portobello 20 February

near Store 1:00-2:00pm

10 minute spaces available

+64 3 455 5299

dunedin.southmp@parliament.govt.nz



Shop 1, South City Mall,
Cnr King Edward St &
Hillside Rd, South Dunedin

Authorised by Clare Curran,
Parliament Buildings, Wellington



Labour



Serving the needs of older people

Age Concern Otago Falls Prevention Programme *For men and women 65+*



Portobello Bowling Club

Steady As You Go[©]

Strength & balance exercise classes
Mondays 10 am

Tai Chi Classes

Mondays & Thursdays 1.30 pm

Enquires: Margaret Dando 477-1040 Ext 702

Otago Peninsula Community Board Update

Annual Plan 2016

The public consultation is underway for this year's Annual Plan, which the Dunedin City Council (DCC) uses to set its priorities for the year ahead and the budget to make things happen.

Last year, with the community's help, Dunedin City Council mapped out the next ten years for our city in the Long Term Plan (this happens every three years) and how this would be paid for. They've tweaked the plan this year and want to know if you think they are still heading in the right direction. For example, Council is planning to put more money into economic development, arts and culture and community grants.

You can find out more about the proposed changes at www.dcc.govt.nz and then use the online form to let Council know what you think by **5pm on 20 April**. A consultation document outlining the key changes is going to every home in Dunedin, with information about how to give feedback. There will also be some events during the public consultation and it would be great to see you there to discuss the proposals.

Public meeting and workshop		
Monday 4 April 2016	5.30pm-7.00pm	Dunedin Public Art Gallery Auditorium The Octagon, Dunedin
Drop-in sessions with Councillors and Community Board members		
Tuesday 12 April	4.30pm-6.30pm	Macandrew Bay Community Hall, 1 Greenacres Street, Macandrew Bay

The Hereweka Hike



Sunday, March 6th dawned beautifully fine and clear for the inaugural Hereweka Hike. The Hereweka Harbour Cone Trust was delighted to have 200 excited and eager walkers of all ages take the opportunity to explore the Harbour Cone property. With a fine hot day there were plenty of walking packs filled with water and liberal use of sunscreen to get people through the 6.5 and 11.5 kilometre courses. The public response to the hike was overwhelming and the trust thoroughly enjoyed sharing

Hereweka with everyone. A special thanks to CRT for the marker posts and Jane Ashman for providing parking at Bacon Street. This is the first event that the Trust has held at Hereweka and we are looking forward to holding more of them in the future. The hike really opened up people's eyes to the scenery, history and opportunity that the property provides for Dunedin. Many thanks to everyone and we're glad you enjoyed your time with us, see you all next year!

**Paul Pope – Trustee,
Hereweka Harbour Cone Trust**



OTAKOU GOLF CLUB

Email: otakougolf@paradise.net.nz

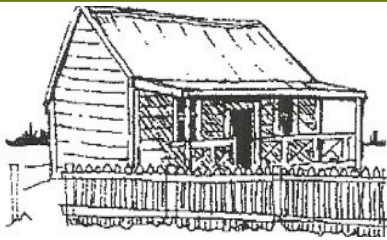
Otakou Golf Club, po box 1232, Dunedin



It is great to see some of the younger members making an impact on the course and long may it continue.

As always New Members Welcome.





OTAGO PENINSULA MUSEUM & HISTORICAL SOCIETY INC.

17 Harington Point Road, Portobello, Dunedin 9014

Museum News

Recently we were given the opportunity to obtain memorabilia from Bill Moss who is a nephew of Percy Moss, the Master of the ferry *Tarewai*. We hope to have a special display of all the info we got – which includes Percy's money satchel and his whistle for when the ferry gangplank was to be lifted before heading off to Port Chalmers or from Port Chalmers to Portobello. There are some great ferry photos, photos of his house and booklets which include some of Percy's father's notes from the Engineers Daily Log Book for the steamer *Iron Age* dated 1884.

Percy's father – Edward Miall Moss was the son of a Congregational Minister in London. After serving an apprenticeship in engineering Edward came to Australia in the early 1860's, thence on to New Zealand, taking part in the Maori War under Major Von Tempsky and Colonel Whitmore. Later he was an engineer on one of the Otago Harbour Board Dredges then started the Portobello to Port Chalmers ferry. Edward was a generous and obliging man and was always ready to cross the harbour in all conditions at any hour if medical attendance was required. (Portobello was served by the Port Chalmers Doctor). When Edwards's health faded his son Percy Moss took over the ferry run.



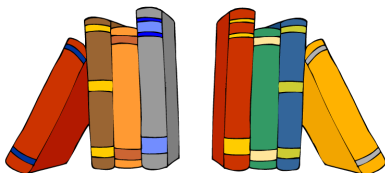
With **ANZAC Day** coming up soon (to be held at the Museum on 25 April at 9.30am) we remember the Dickson family who lost 2 sons during WW1. The Dickson family owned the farm *Belmont* at the end of Allans Beach Road.

Donald Mckenzie Dickson became Private 10.1468 in the Wellington Regiment. He was killed in action at Gallipoli on the 18 July 1915 aged 21 and is buried in the Shrapnel Valley Cemetery on the Gallipoli Peninsula. Millen Stuart Dickson became Private 59622. He joined the NZ Expeditionary Forces 33rd Rifles.

Millen was a Plumber. He was sent to France from the UK on 20 March 1918 and within 6 months he had received a bomb wound to his forehead and died of his wounds 2 weeks later on 28 September 1918. Six weeks later the War ended. He is buried in Lebucquiere Cemetery in France.

We have purchased 2 gazebos - 2 sizes. If anyone would like to borrow these for an event then contact the Museum (Warren on 4780-255). There is no cost for community groups as these gazebos were purchased with a grant from the Peninsula Community Board. There is a charge for private use.

If you want to become involved with the Museum in any way then give Warren a ring or you can email theotagopeninsulamuseum@gmail.com. We would welcome your input.



Library News

We held our 146th Annual General Meeting (the only meeting for the year) recently and welcomed along 2 new members for our committee – Jenny and Vivien. Dot, our Librarian, has purchased a lot more Non Fiction books (as requested) so pop along to the library on a Thursday between 11am and 1pm in the Coronation Hall.

Badminton

The Club has resumed with the first games on 3rd of April. Keep a lookout on the community noticeboard at the shop or give

Geoff a ring on 4780-688 for more info.

We'd really like to have some new members join our great Club.

Table tennis is also available to play.

We play on a Sunday night 7-9pm at the Coronation Hall.

Rackets are available for use.



Otago Peninsula Trust guardianship reaps benefits for Peninsula

Burgeoning visitor numbers, increasing income and solid support for wildlife welfare has meant Otago Peninsula Trust presented members with a very positive 2014/15 Annual Report.

Robyn McDonald, Chief Executive of the Trust, says "Key achievements for the 2014/15 period include a 15% rise in turnover at the Royal Albatross Centre, a new product 'Tiki Tours' offering city return transportation to albatross and penguins, Glenfalloch restaurant refurbishing, 26 Albatross chicks fledged, a "friends of the garden" group set up for Glenfalloch and over 1100 children taking part in education programmes. Little Blue Penguins have been growing at a rate of 10% per year helped by 1400 students planting 6000 plants for penguins over the last three years. These results help Otago Peninsula wildlife and visitor industry prosper, we provide employment for 85 people throughout the tourist season and host over 200,000 people per year through our attractions".

"Since the Annual Report period we have raised over \$2000 extra through Givealittle for albatross chick care and created huge albatross awareness and engagement through our support of the DOC live webcam #Royalcam initiative, which has featured on national media and created many more albatross advocates".

The Trust, formed in 1967 to preserve and enhance Otago Peninsula, is responsible for managing iconic attractions on Otago Peninsula including the Royal Albatross Centre, Fort Tairaroa, Glenfalloch Woodland Garden, Fletcher House and a joint venture, Blue Penguins Pukekura. Other key activities include maintaining the Sandymount Lime Kilns, Colinswood Bush and encouraging future conservationists through educational activities. Robyn adds "We are so grateful for all of the volunteer support that makes the Trust's achievements happen, from the volunteer Trustees to the Fort Tairaroa Committee, the Friends of Glenfalloch Garden and many other people who generously give us their time and resources to care for our unique Otago Peninsula".

The success of the partnership the Otago Peninsula Trust has with the Department of Conservation is also heralded. The Trust is the only concessionaire permitted on the Royal Albatross Colony nature reserve and contributes financially, and with staff support such as supplementary feeding, to the albatross fledging success. Pukekura has also been recognised as having the only colony of the endangered Red-billed Gulls in New Zealand not in decline. This Red-billed Gull colony is situated on land leased by the Otago Peninsula Trust adjacent to the Tairaroa Head Scientific Reserve and there is a continued increase in nesting pairs. The partnership with Pukekura Trust at Pilot's Beach has resulted in penguin breeding pairs growing from 186 to 208 in the last year.

Since Glenfalloch Restaurants was taken over by the Trust in 2014 significant investments have been made to maintain Glenfalloch's status as Dunedin's favourite wedding venue. In 2014 the chalet restaurant was given an elegant makeover to create a stylish, fresh décor to complement the lush garden locale and in 2015 the chalet was double glazed and re-configured. Glenfalloch Garden continues to attract visitors and holds vibrant annual events including a Fairy Party, Gnome Hunt and Green Bike activities. In 2015 Glenfalloch's Matai tree was registered on the New Zealand Notable Tree Register; it's believed to be in excess of 1000 years old and is 13.40 metres tall, making it the third tallest Matai in the South Island. A conservation plan is being worked on for Glenfalloch Homestead and plans are advanced to investigate a Potters Cottage visitor accommodation option.

Education is a key part of the Trust's mission with over 1100 school students from 49 schools taking part in the Otago Peninsula Trust's education programme. This provides primary and secondary students with a rich learning experience, opportunities to interact with experts and up-close viewing of unique wildlife. The Toroa Award, Coastal Otago Youth Conservation Award, was restructured this year to provide Otago Peninsula schools with the support necessary to carry out conservation projects on the Otago Peninsula.

Robyn states "Educating children to understand and care for our wildlife and natural environment is a very important action for the Trust. Children are our future conservationists, trustees, employees, volunteers and beneficiaries. In the end it's our mission to preserve and enhance Otago Peninsula. The work we do, the successes and achievements we have, as are guardians for now and future generations.

The salad days are nearly over and soon we will be dishing up Pea Pie and Pud (spud) again. Did you know that the potato was first grown in Peru and introduced to Europe in the 16th Century by the Spanish?

The English word *potato* comes from the Spanish word *patata*. The word Spud is likely to have derived from a digging tool, by the 1840's the word transferred to the tuber itself.

To go with the creamy mashed potato we have chicken and mushroom, mince and cheese, venison and our vegetarian option, Moroccan turnovers. Roast beetroot and kumara with dates, feta cheese and Moroccan spices, yum.

We were left a huge pile of apples to give away and they soon disappeared so if you have an over abundance of fruit or veg' leave them with us for others to enjoy.

From all of us at Penguin Café we look forward to seeing you



585 Highgate
Maori Hill
Dunedin
9010
Tel: 03 466 7227



Coronation Hall
853a Portobello Road
Portobello
9014
Tel: 03 466 7227



Jim Webb
Osteopath/Physiotherapist:

Coronation Hall
Wednesdays 8am – 5pm

By appointment only

Take time in 2016 to fix those niggling aches and pains by visiting Jim Webb in our Portobello Clinic. At Integrated Health Otago we offer Osteopathy, Physiotherapy, rehabilitation, biomechanical assessment, soft tissue techniques, dry needling, cupping and deep tissue massage for both ACC and private clients.

Based in town during the week? You could see Jim or his team of clinicians at our Maori Hill Clinic, where we also offer Digestive Health Care, traditional Chinese Medicine and Acupuncture, as well as Podiatry with Rebecca Finchett of Knox Podiatry.

For more information or to book an appointment call **466 7227**

IHO - providing quality health care for our local community

email: enquiries@integratedhealthotago.co.nz

www.integratedhealthotago.co.nz

Introducing the 2016 Caselberg Trust Artist in Residence



Hi I'm Becky Cameron, and I'll be staying in Broad Bay till mid June, carrying out an art project based on Hereweka Harbour Cone. I'll be exploring the factors that have shaped the area in the past, and that continue to shape it – the geology, the natural history, the people. I'm seeing what materials I can source from the area to make drawings and ceramics; I've been experimenting with the local clays, and making paper from thistles and other weeds.

Say hello to me if you see me out and about, or feel free to contact me on 0274272011, I'd love to hear your stories about Hereweka Harbour Cone. Later in the residency I'm hoping to hold a workshop using local clays – look out for that some time in May.



Welcome to the Peninsula Podiatry Clinic offering a full range of treatments.

People come to see me for lots of different reasons, nails can become difficult or painful to manage, I also offer nail surgery for ingrown nails.

Hard Skin and corns can be removed painlessly.

All new patients receive screening and advice about improving and maintaining their foot health. I see parents with concerns about their children's feet and legs.

Kids can experience growing pains and issues during exercise. I can offer advice and treatment to get them going again.

I can assess foot and leg pain in all ages and offer appropriate treatments.

Now offering 'Dr Comfort' specialist shoes for Diabetics and people who have difficulty finding shoes to fit the shape of their feet.

Clinics are now being held one Saturday per month. Please feel free to give me a call if you have any questions or would like an appointment on 03 478 1030 or 022 301 6199.

Email me at info@knoxpodiatry.co.nz

I also have clinics in Dunedin, Mosgiel, Milton, Balclutha and Lawrence

DIARY DATES TO NOTE

Annual Plan Drop in Sessions with Councillors - Tues 12th April - 4.30—6.30pm Mac Bay Hall
Wild Dunedin - Festival of Nature - 22nd - 25 April - www.wilddunedin.co.nz
ANZAC Day - Monday 25th April - Museum Grounds - 9.30am.
Stop Working Bees - Every Sunday - 10am—1pm - End of Bacon St. Starting 5th June
Pilates - Every Monday at 7pm. Coronation Hall
Steady As You Go - Every Monday 10am. Portobello Bowling Club.
Badminton—Every Sunday 7pm - Portobello Coronation Hall
Portobello Library - Every Thursday 11am - 1pm



*The Portobello
Hotel & Bistro...*

Your local since
1874, located in the
heart of Portobello.
Good honest "pub"
fare and stunning
harbour views
Families welcome
Children's Menu
Available
Open 7 Days.
PHONE: 03 4780 759

NZ Greenstone & Art

Incorporating custom designed Pounamu / NZ
Greenstone carving studio.



Showcasing NZ and Local Artworks
Proudly supporting
local Peninsula artists

**Now open from
9.30.am to 5.30pm Daily**

website: www.nzgreenstoneandart.net

Portobello. Otago Peninsula.
(Next to the historic 1908 Café)
Phone 0800 250 225

PORTOBELLO PRESBYTERIAN CHURCH



We are still open. Although the Andersons Bay Church closed we meet on the first three Sundays of each month at 10 am. An up-to-date notice is always displayed on the window. On the first Sunday of each month Jane Cox leads worship On the second Sunday we all take part. On the third Sunday a visiting minister leads us and on the last Sunday we visit other churches. When there is a fifth Sunday we go to Pukehiki Community Church

Come and join us.

Peninsula Medical Centre

A friendly reminder to all our
patients that the flu vaccines
are now available.

**Get in quick before the
winter arrives!!**



**Peninsula
Garden Services**



ALL GARDEN CARE AND MAINTENANCE
RESIDENTIAL • COMMERCIAL • RURAL

Lawns • Water Blasting
Waste removal • Weed & Gorse Spraying
Gutter Cleaning • Shredding & Mulching

Professional & Personal Service
All work is pre-quoted — No nasty surprises!

03 478 1257 | 020 4037 4200

Autumn is a great time to transplant plants/trees, mulch the beds/bank untidy areas and cover with good woodchip/compost/topsoil.

Hedges need trimming, trees topping and the waste taken.

We offer most garden services, are local, reliable and have the tools and expertise to do the job.

We can do landscaping and specialise in new homes with gardens that need to be built.

We also offer a regular lawn/weeding service at a reasonable price.

Peninsula Garden Services

Phone Wayne on 4781257/ 02040374200

Ric's Galley Takeaways

Award winning takeaways available 5 evenings per week from 5pm

Closed Mondays and Tuesdays

Fresh Fish available most Friday evenings

Phone 4780 105 to order your takeaways.

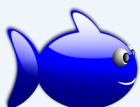
Vegetarian Baskets and Seafood Baskets available

We also do baked fish of your choice for those who prefer no batter.

Latham Bay Burgers available every evening.

Vegetarian Burgers now available

We have *eftpos* facilities



Portobello Deli



For a comprehensive range of groceries
Milk Bread Meats Eggs Frozen Foods
Novelty Ice Cream Drinks Confectionery
Pies

Organic Products Fruit & Vegetables

For your convenience we also stock a superb range of wines and beers

Open 7 days. Eftpos, Visa, Mastercard
1 Harington Point Road Phone 4780 555

pbo.deli@extra.co.nz



Thanks to Jo and friends at
Warehouse Stationery,
South Dunedin for the great
printing they do for us.
PLEASE SUPPORT THEM

Hire a wood chipper

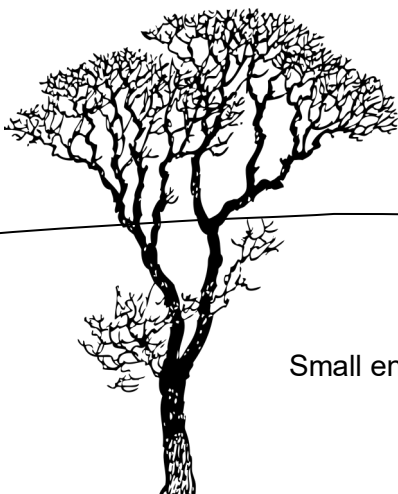
Save a trip to town and hire a wood chipper in Portobello.

Small enough to fit down a path, big enough to cope with wood up to 90mm diameter.

13hp motor makes for easy work.

Will deliver and pick up.

Call Jack Barton on 478 1081



Coastguard Dunedin has been concentrating on training up four to six senior crew to Masters level this year. Coastguard New Zealand has been approved to issue Industry Specific Certificates for Masters of a Coastguard Vessel. This involves completing over 20 modules ranging from Seamanship to advanced helming in rough weather and navigation, along with a range of practical skills, many of which involve formal assessments by internal and regional assessors. In addition, Coastguard Masters must have completed over 150 hours of commercial boating experience, including at least 75 day and night hours on a Coastguard Rescue vessel. While the full training can be completed in less than one year for the very enthusiastic, most Coastguard volunteers usually take around two years to cover the full training and assessments.

Our senior crew will be undergoing their assessments over the next few months. This involves a formal theory exam with an 80% or more pass rate (and 100% in areas where the vessel safety is involved) along with a two to three hour assessment by a senior Coastguard assessor. The unit is confident that all our senior crew will pass this with flying colours.

The Dunedin Coastguard vessel is already hooked up to a vehicle ready to go at any moment that is required. At present we launch at Wellers Rock or Broad Bay. The vessel is parked at the Coastguard Shed headquarters in Hereweka Street, Portobello. If you would like to become part of the Coastguard organisation then please visit the Dunedin Coastguard website or send an email to dunedin.admin@coastguard.nz

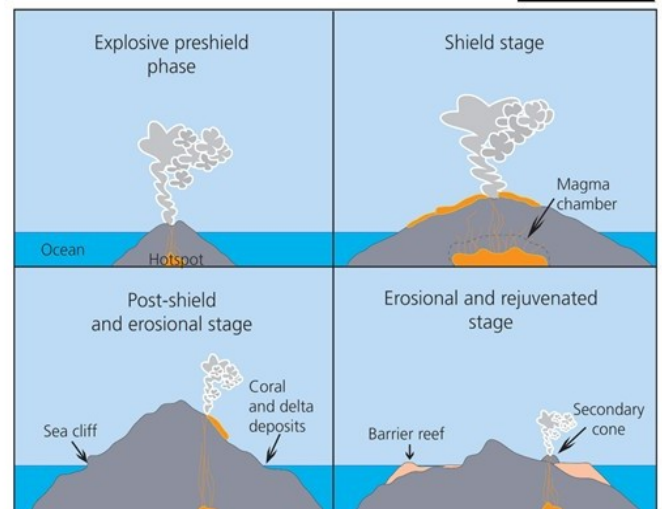
Hereweka Harbour Cone Summit

Is it a volcano?

Hereweka Harbour Cone (315 metres) is not a volcano that erupted ash and lava from where you are standing. It was part of the much larger Dunedin volcano (Rakiriri) that formed the hills around Dunedin in three eruptive phases between 13 and 10 million years ago. Lava from many vents slowly built up a 'shield' volcano that reached 1000 metres and was centred around Port Chalmers. The Otago Harbour was created through a weakness in the rock and erosion over millions of years.

The conical shape of Harbour Cone (Pukemata) is the result of erosion centred on a cluster of very hard volcanic rocks that resisted weathering. Columnar basalt has formed around the summit of the cone from hot pyroclastic flows that cooled to form multi-sided columns. There are several other spectacular exposures of columnar basalt around Dunedin including the Organ Pipes on the slopes of Mt Cargill. .

www.hereweka.org.nz





Harbourside Hair Design

Good Views, Great Coffee, Awesome Cuts!

Suzie - 4 Arnett Street Portobello - 4780 764

Hi there Everyone,
Welcoming old, existing and new clients to my boutique salon.
Stockists of Delorenzo and Angel Haircare
Book in now and enjoy a wonderful pamper and great coffee
In the peaceful surrounds of Portobello.
Open Monday- Friday with two late nights

A LOCAL KEEPING IT LOCAL THANKS TO YOU



WOOD STACK LTD

Local seasoned Firewood for sale

\$85/metre Pine

\$120/metre Macrocarpa

Kindling varieties available
Free Delivery on the Peninsula. 0275175599
No Mess, No Fuss, Call us.

Peninsula Plumbers

2004 Limited

Contact Reuben

0274 144 741 or A/H 478 0764



Toilets



Taps



Laundry



Kitchens



Bathrooms



Alterations



Maintenance

'A local plumber for local people'

Portobello Community Inc

Chairperson: Paul Pope—**Treasurer:** Christine Neil — **Secretary:** Nicki Topliss —

News Editor: Wayne Cameron — **Deputy Chair:** Geoff Sheridan

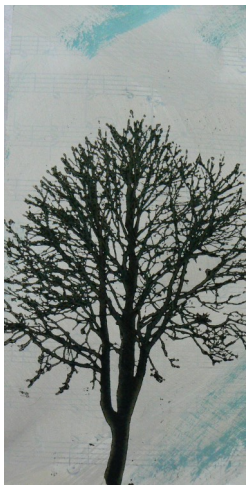
Committee: Ruth Seeney, Pete Dugar, Davinia Thornley, Sandra Clearwater, Richard Steentjes,

Sue Rhodes, Racheal Bergersen, Alicia Monteith, Lyn Sheridan and Jenny Weeks

Meetings held every 3rd Tuesday of the month.

Coronation Hall Kitchen, 7.30pm

All welcome



Some of the beautiful prints made by visitors to the Citizen Sci-Art exhibition held at Coronation Hall in February with OPBG. Thanks to Lynn Taylor and Jenny Rock for their wonderful tuition. There are more prints scattered through this Newsletter.

Hooper's Inlet Hall

A Huge thank you to the Wharf St Band once again a great evening had by all that attended. Please consider the Wharf St Band for any event you may be having, they can certainly get people up dancing and everyone having a fantastic time. Be sure to look them up on Facebook and keep up to date on where they are playing next.



Although once again we had a really enjoyable night, we did not get the numbers we were hoping for, so we will be struggling to pay the upcoming insurance account. Please keep supporting the meat raffle at the pub on Friday nights, this is proving to be popular and will help with the ongoing costs of the up keep of the hall.

We would love for new members to join the hall committee and we would be keen to hear from anyone who would be interested in taking over the caretaking role at the hall. This hall is privately owned by the community so it is very unique, but it needs more people to help run it.

Any idea's suggestions would be very welcome.

Cheers Jackie



Exciting news!!!

Building available for
Community use:

Following our very successful Community meeting and subsequent discussions with the Otago Playcentre Association, we are very excited to announce that we can now accept requests for the fantastic Peninsula Playgroup building (right next to Portobello School) to be utilized by others.

We already have some ideas in the pipeline and look forward to sharing them with you as they come to fruition.

For all enquiries please contact
Racheal Bergersen on 022 136 5515.

We look forward to hearing from you.

Peninsula Playgroup.



1908
Cafe

LICENSED RESTAURANT ~ PORTOBELLO

Lunch

Wednesday – Sunday 12 noon – 2pm

Dinner

Monday – Sunday from 5pm

Cafe 1908 has capacity for 55 people
and specialises in those
special occasions

Call Pauline now on 4780 801
or email cafe1908@xtra.co.nz



Portobello Bowling Club Inc

Situated 5 Sherwood Street. New Members always welcome
Bar & Kitchen facilities for all types of Functions - Full size Billiard Table
Contact Secretary Brian Cameron 4780 816 for further information
Social Evenings held Wednesday's 4pm to 7pm & Sunday's 4.30pm to 7pm
Social Membership \$20.00pa

*Our Monthly Tournaments finished on a high with the February & March ones being completed without a hitch
Interclub Competition is also finished for the Season - our Saturday afternoon Triples Team finishing in Fourth
place – the only Team in the top five*

*We had visits from Mornington & Karitane this year & all participants enjoyed themselves - the weather was kind
to us as well – thanks to all whom attended*

*The Hi Jacks Competition is also nearly finished with the last round being played on the Club's Closing Day -
16th April at 2.00pm - Good luck to all players -The Men versus Women Trophy will also be played*

A barbecue to follow the last game

*Once again we thank all our Sponsors - Special thanks to Portobello Hotel & Bistro & Frances Hodgkin's Retirement
Village for their very generous Sponsorship*

Congratulations to all winners in this years Club Championships - well done

If you are interested in becoming involved with our Club, Socially or as a Bowler, please feel free to give us call.

ANOTHER DAY in PARADISE from Olly's pen

I was quite chuffed when someone rang me thinking I was the editor of the news letter! And someone else thought I was someone of significance at the Yacht club even! I am neither!!! I'd better cut back on my meditations – they might be too strong. Hmmm. On a much more mundane note – I'm painting the exterior of our house. I'm hopeless when it comes to heights so you can imagine how I felt when my rear neighbour kindly offered me his scaffolding – two storeys high!!! I shunted my vertigo to the side and clambered up – holding on to the top railing with one hand while carefully painting with the other! It's getting easier I must say. And the house is in shock I think. It's going from pink to white???

E' bello in paradiso!

Olly

MAURI HAUORA

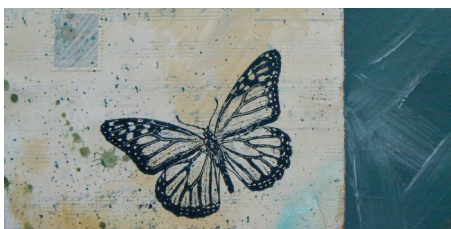
Someone asked me, 'What's this Mauri Hauora stuff Olly?'

My reply was, ' It's Indigenous Narrative Therapy.'

She shrugged her shoulders and said, 'Oh – that!'

Classes are on Wednesday at 7pm. There's still room for a couple more if you're interested in Psychology, Philosophy or the Neuro sciences and the workings of the mind in relation to the environment.

Olly



Women's SELF-Defence

Physical Self-Defence techniques, body-language and voice
Positive assertiveness, self-esteem and confidence healthy and unhealthy relationships
Finding support, supporting others knowing your rights.

A fun, supportive day of learning and practicing a range of techniques -- mental, verbal and physical -- which anyone can use, no matter how big or little they are, for staying safe and empowered!

No experience needed.

All abilities and all women welcome including transgender/takataapui.



Cost: Free!

When: 29 May 2016, 9am - 5pm

Where: Portobello

Where: Portobello on registration

To Register (before May 22nd)
email Helen: h.r.martin@icloud.com
or Racheal Bergersen

Taught by an accredited member of The Women's Self Defence Network - Wāhine Toa

PENINSULA DOMESTIC ART



Home Cleaning
weekly, fortnightly, or just a one off

Quality. Value. Peace of Mind

Racheal Bergersen 0221 365 515

bergersen_01@hotmail.com



If you have any great news
or grand achievements you'd like
to share with the community
please let us know.
Email pbocomm.inc@gmail.com



SANDYMOUNT.

(FROM OUR OWN CORRESPONDENT.)

October 18th.

Two very destructive bush fires broke out on Friday, the 14th, one in this, and the other in the Harbour Cone district, and have done damage to the extent of several hundred pounds—burning miles of fencing, several houses, stables, byres, &c. What makes the damage greater is that the unfortunate settlers' crops are now all exposed, as a good many of them have not got a fence left around their properties. The fire on the Mount, I am informed, first originated on the farm of Mr Peter Carmichael, who had been clearing some ground a day or two before, and during the operation set fire to some heaps of rubbish. A strong nor'-wester springing up on Friday afternoon, the smouldering fires were soon fanned into flames, and spread with amazing rapidity; in less than an hour miles of fencing (mostly log) were in flames, and it was with the greatest difficulty that the buildings were saved; in fact, some of them were actually on fire, but there being plenty of strong and willing hands, they were able to save the buildings, with the exception of one stable belonging to Mr Stubbs. The greatest sufferers on the Mount are Messrs Morris, Stubbs, Brown, and Mrs Craig, they having had every fence on their land burnt. Mr Morris also loses 10 tons of hay, one dray, and some pigs. Mrs Craig lost

hay to the value of £40, besides a considerable amount of damage being done to her house, which caught fire once or twice. Those who have suffered more or less are Messrs Carmichael, Bryce, Davis, and Weir, they having had a considerable amount of fencing burnt. The fire on the Harbour Cone first started somewhere about Mr Larnach's, and the greatest sufferers by it are Mr Larnach, over a thousand cords of firewood; T. Scott, stable, byre, fencing, &c.; Mr Abraham, dwelling-house, furniture, clothes, &c.; Mr Arnott, stable, byre, fencing, &c. Mr Arnott had his stable insured for £25. Mr W. Riddle lost a six-roomed house (not insured) and some timber. The others who have lost more or less are Messrs David Scott, Stewart, Ellis, and Fleming, and Dickison. The Sandymount school-teacher's house was burnt, and was also the Harbour Cone Cheese Factory. Several settlers in the Seal Point Ward have suffered some damage, but the wind luckily falling about midnight, they were able to arrest the progress of the flames. During the afternoon the heat and smoke was so great that traffic was entirely suspended on the main county road for an hour or two.

Friday, the 14th October, will always be remembered as Black Friday on the Peninsula. Many of the poor settlers are half-ruined, and it will take many a day to make up for the loss they suffered. It will also act as a caution to persons lighting fires to be more careful in future as to how and when they burn bush.



Beautification planting done by Portobello Community Inc in 2013 beside the public toilets and adjacent to the bus stop on the opposite side of the road.

Above:- Plants beside the public toilets.

Right:- Those plants today—and the seat made and installed by Barry from 1908 Café.

Tenā koutou katoa from Ōtākou Marae

Toitu Wahi Tupuna commemorative plaque at the John Wickliffe Plaza:

Several representatives of Ōtākou attended this blessing and unveiling on 22nd March 2016 in recognition of the site's importance and place in NZ's national identity, the Toitu tauraka waka was one of several Kāti Māmoe-Kāi Tahu landing places in the Otago Harbour, situated beside the Toitu Creek. The tauraka waka site provided a softly sloped beach for landing waka, a good point of entry to the surrounding bush and mahika kai, as well as access to fresh water. During the early years of colonial settlement of Dunedin the tauraka waka area became a vibrant trade and market place for a brief period of time. The expanding establishment of the city resulted in the tauraka waka being submerged under the building and foreshore reclamation of the city.



Sporting Achievements of Ariki Children's Athletes:

Our congratulations go to Sarah Langsbury and Duncan Trevithick, who competed in the interprovincial athletics in March. Otago finished 5th overall the best placing in 17 years! 8 Otago Children's records were broken! Two Ariki Athletes who did exceptionally well were Duncan Trevithick - highest scoring individual 12 year old boy and Sarah Langsbury - 2nd highest scoring individual 12 year old girl - the fastest Grade 12 Girl 80metre hurdler in NZ - 13.00 sec!



Featuring Hoani Smith

Hoani Smith is the son of Kate Smith and moko of Eleanor Murphy, nee Russell of Ōtākou. Hoani's Graduation was in Christchurch on the 24th of March, having graduated with a degree in Applied Science specializing in Sports. He also received the Eke Panuku Supreme Maori Student Scholarship Award for CPIT. Hoani is now working at Lincoln University as their Strength and Conditioning Specialist.

Hoani Smith with his proud taua, Eleanor Murphy of Ōtākou. He is wearing the Taiaroa 'Huri Whenua Korowai.' supplied by his Auntie Michelle Taiaroa-McDonald.

Ōtākou Website

Feel free to browse our website. Whanau wishing to book the marae for functions can do so online.

<http://www.otakourunaka.co.nz/#home-image>



Want a bit of happy in your life? Check out the DOC live-stream webcam trained on a Royal Albatross Family at Pukekura/Taiaroa Head. People are becoming addicted! Albatross can often be seen flying past. The web cam is facing south, on a clear day you see Dunedin city in the distance. Keep an eye out for cruise ships and other vessels sailing by, or for little blue penguins heading back to their nests at dusk



Local Hall Hire Contacts

Coronation Hall, Portobello - Wayne Cameron - 4780 424
Scott Hall, Harwood - Lucinda Redshaw - 4780 629
Hoopers Inlet Hall - Jackie Clearwater - 4780 508



Annual Plan 2016/17 – Time to have your say!

Dunedin is one of the world's great small cities, so naturally, it follows that its residents are great too! Last year, you helped us map out the next 10 years through the Long Term Plan and how projects will be paid for.

Now it's time to have your say on some changes we're proposing such as more funding for economic development, arts and culture and community grants and changes to our cycleways plan. A more detailed consultation document setting out these changes will soon be delivered to your letterbox, so keep your eyes peeled.

When can I have my say?

The consultation runs from Thursday, 24 March to Wednesday, 20 April 2016.

Where can I find out more and how do I have my say?

Visit:

The Annual Plan consultation document, supporting documents and information about the events happening as part of the consultation and how to have your say are available at www.dunedin.govt.nz/2016AP

A copy of the consultation document and supporting information is also available to read at all DCC Customer Services Centres and Dunedin Public Libraries.

Attend a public meeting and workshop:

Dunedin Public Art Gallery | 30 The Octagon, Dunedin | Monday, 4 April | 5.30pm – 7pm

Attend drop-in sessions with Councillors:

- Macandrew Bay Hall | 1 Greenacres Street, Macandrew Bay | Tuesday, 12 April
4.30pm – 6.30pm

Submit – we encourage you to provide feedback online at:

- ➔ www.dunedin.govt.nz/2016APfeedback
- f www.facebook.com/DunedinCityCouncil
- 🐦 www.twitter.com/Dncitycouncil

03 477 4000

www.dunedin.govt.nz/2016AP