
portobello news

OUR HOME BY THE OTAGO HARBOUR

FEBRUARY-MARCH 2022



Portobello Community Inc. Update

CHAIR'S MESSAGE

Kia orana kōtōu,

As this is our first newsletter for the year, I would like to wish everyone a Happy New Year. Although to be honest, I feel like a more appropriate greeting might be "Wishing you a relatively calm and comfortable 2022". You never know what's around the corner these days.

That said, if I am going to go through the ups and downs of life in any place, I'm happy it's Portobello.

If you're out and about in the morning, you may have noticed school has started back up. On behalf of Portobello Inc., I would like to welcome Ruth Faulkner who will be taking over the role of Portobello School Principal for two years while Mel Jewiss works with the Māori Achievement Collaborative. Welcome to Parihaumia | Portobello Ruth! We hope you enjoy your time with us and look forward to seeing what you have planned for our tamariki.

Make sure you have a look at our pump track update. With Covid restrictions making our market days increasingly difficult, the Pump track is Portobello Inc's main project and it is ticking over nicely. If you're interested in finding out more, you can come to the next meeting. These will likely be held online for at least the next few months so please email us at pbocomm.inc@gmail.com if you would like to be sent the link.

Enjoy your day/week/year.

Kā mihi,

Stacey

La Presidente del Portobello Inc.

PENINSULA PUMP TRACK PROJECT

We're extremely grateful to the Alexander McMillan Trust, which has awarded us a further \$15,000 towards the project. Thanks also to everyone who took part in our local fundraising efforts in 2021, including the Community Quiz Night at the Portobello Hotel, the Cyclocross Race, and the Community Comedy Night.

We're also actively applying for a range of other grants across national, regional, and community funding organisations, which will take us closer to our goal of \$280,000.

If you'd like to help out by donating, please head to the Peninsula Pump Track Givealittle fundraising page. Any

donation, big or small, counts towards our goal of making a world-class all-wheels pump track on the Peninsula.

givealittle.co.nz/cause/portobello-domain-pump-track

About the Project

The pump track will be designed to be accessible and widely appealing to a broad spectrum of riders. We see this project as a promising tie-in to our new Peninsula cycleway, with the potential to be a destination recreation area for wider Dunedin.

MARKET DAY POSTPONED

Our hopes for a having a once-a-season Market Day have been thwarted lately by COVID outbreaks. Our spring market was cancelled due to uncertainty around the Delta outbreak, and we were just about to send out the invitations to a late-summer market when Omicron got its foot in the door. As much as we'd love to see the community together, with cases rising dramatically, now doesn't feel like a good time to plan a new event.

Many of our lovely vendors have kindly offered for us to hold their registration fees until the next market, which will hopefully be in late autumn or winter. However, if anyone would like a refund, please email us at pbocomm.inc@gmail.com and we'll get you sorted.

portobello community inc.

President

Stacey Kokaua

Treasurer

Amy McFadzien

Secretary

Michael Lascarides

Newsletter Editors

Michael Lascarides & Laura Shepard

Committee

Sandra Clearwater, Ruth Seeney, Richard Steentjes, Dan Parker, Geoff Sheridan, Lynne Sheridan, Craig Newton, Jamie Ledbetter

Otago Peninsula Community Board

Happy New Year everyone. I trust all of you are having a safe and happy summer. It seems like an age since I was wishing the community a Merry Christmas! Summer has been and gone at times and then has come back again for a second visit. The recent rain was welcome for some parched paddocks and dry water tanks around the neighbourhood. In amongst all of this we still have the threat of Omicron hanging over us and while it is worrying, I've been trying to take an optimistic view that hopefully the Peninsula and its residents will be safe for some time to come.

PUBLIC TRANSPORT

It's not been a surprise to see other communities having issues with the public transport network following the closure of some city school bus services. I think back to a few years ago when the Board and community took up the pen and actively challenged the Otago Regional Council (ORC) over its services for our school age commuters. It wasn't easy, but in the end we prevailed, because everyone stood united. It's by no means perfect, but certainly better than what we had presented to us. The reality is, residents need to vocally remind the ORC that we need good public transport on the Otago Peninsula. With their Annual Plan coming up, make sure you continue to advocate for improvements you think are required.

PENINSULA CONNECTION

Broad Bay Sinkhole—Word from the Council is that a contractor has been procured and the work will be starting shortly. The Council have indicated that the problem is a collapsed stormwater pipe 8 metres below the road, so it's not an easy fix. On a positive note, they have reassured the Board that the "Great Wall of Broad Bay" is not structurally compromised.

Portobello—If you're like me you'll be wondering when the next round of work in the village will begin again. I'm advised that the Council has a contractor in place after the tender process and stage two, which includes the roundabout, will begin in June along with the remaining widening work. This phase is expected to be completed by the end of the year.

Broad Bay—A contractor has also been chosen for the Fletcher house section, and work will start in after the sinkhole has been repaired. There will be some disruption to traffic while that work is completed, but it will be great to get this over the line and finished.



ANNUAL PLAN 2022

It doesn't seem that long ago that the Community Board were canvassing the community for the 2021 Long Term Plans for both the City and Regional Councils. I can't stress enough how important it is for residents to get out of the local government fire and take control of the frying pan. It's critical for people to speak up and say what they need in their community. Next year the Board will be doing just that, but we'll also be encouraging people to speak up for themselves and their neighbours.

NEWS IN BRIEF

- A new set of signage will be added to Peninsula Connection to remind people to be courteous, share the path and keep

to the left.

- Welcome to the new acting principal at Portobello School, Ruth Faulkner.
- The Community Board are now meeting live via zoom due to COVID, you can watch our meetings on Youtube.



BOARD MEETING & FUNDING APPLICATIONS

Facebook—Please take the opportunity to use it if you can and share information with your friends, neighbours and whānau. <https://www.facebook.com/pencomboard/>

If you have any issues that you would like to raise or discuss please don't hesitate to contact myself or your local Board member. We are here to help you, and only a phone call away. Be patient and kind with your whānau and take care of your friends

and neighbours in the community.

—Paul Pope, Otago Peninsula Community Board Chairman
paul.peninsula@xtra.co.nz (03) 478 0630 or 027 466 8446

Quarantine Island/Kamau Taurua Community Inc.

Kia ora koutou,

Our main news is that our wonderful Keeper (Resident Manager), Meghan Hughes, is moving on from the role of Keeper effective mid-March. She and her whānau will be moving to Portobello and have indicated that they want to remain involved in the Community and help us with looking after the island until a new Keeper is found.

It is always hard to see a Keeper move on, but in this case it's not very far! We want to thank Meghan and Gareth for their passion and commitment to the Community. They've always done far more for us than the role required. We look forward to continuing to spend time with them.

If you might be interested in applying for the Keeper role please see the SEEK ad: <https://www.seek.co.nz/job/55818459> for details.

The past few months have been relatively quieter with Lodge bookings, although many day visitors have come to experience the island thanks to Rachel from **Port-To-Port Cruises and Wildlife Tours**, ferry trips and island *Treasure Hunts*.

Groups who have enjoyed some 'Island time' and volunteering have included **Orokonui Ecosanctuary** who chose the island for their end-of-year volunteer celebration, a 60-plus tramping group, students from **Otago Polytechnic** former refugee programme, a family of former Syrian refugees, a couple of weddings held in the Married Quarters building, and a number of family birthday celebrations.



Thanks to all our volunteers and Community members for their efforts on and off the island over the last few months. Mahi has included releasing and mulching planted seedlings, clearing the inside of the wool shed, removing rubbish, removing old insulation from the roof of the Keepers Cottage and installing new roof insulation, gravelling a new path leading to the Married Quarters, skink surveys, monitoring predator traps, weed control, and a beach litter survey. The charity has also been busy with updating our COVID-19 Protection Framework/Traffic Lights policy. Details can be seen on our website.

We are grateful to **Trees That Count** for funding native seedlings, and the **D.C.C. Biodiversity Fund** and **Rotary Club of Dunedin** for helping subsidise boat transfer costs for some of our volunteers.

We are grateful for the support of **Port Otago** with some more work to improve the jetty and **Tony Pepers** for his help trouble-shooting and installing a new toilet fan in the Cottage during a stay with his whānau.

Many thanks also to **Port-To-Port Cruises and Wildlife Tours**, and **East Coast Charters** who have provided boat transfers to and from the island.

Would you like to join our Volunteer Database? Complete our new [Volunteer Form](#) and here's the link to our [Volunteer Information Sheet](#) for some ideas of how you could help and what to expect. See our website quarantineisland.org.nz for details.



We would be keen to hear from anyone able to assist us with upgrading the resident Keeper's Cottage, to improve the comfort for our Keeper and her whānau.

If you have knowledge or skills, or can assist us financially, we would love to hear from you. Please contact secretary.quarantineisland@gmail.com

If you'd like to visit or stay on the island, as a family group, or group of friends, or for a retreat or workshop venue, see our website quarantineisland.org.nz for details.

You can also subscribe to our monthly e-newsletter to learn about island news, events and opportunities, or join our Facebook Public Group Quarantine Island Kamau Taurua Community, or contact the Island Keeper (Resident Manager) on 03-478-0874 or email quarantineisland@gmail.com.

If you haven't visited before, we host a Community Welcome Day on the last weekend of each month (dependent on COVID-19 restrictions). Just a short boat

ride from Back Beach, Port Chalmers, or Portobello by arrangement. We organise the boat transport, so let us know in advance if you're coming. Details and registration forms for events are on our website. Keep an eye on our Facebook page too.

Upcoming welcome days

Volunteer, relax or explore, or all three! *Dependent on COVID-19 restrictions.*

- Saturday 26th February 2022
- Saturday 26th March 2022

There is something for everyone on QIKT. From relaxing and recharging in solitude and peaceful surroundings, to learning about Island history and ecology, volunteering, and experiencing what makes the Island so special.

Royal Albatross Centre

THE GREAT GULL COUNT—SCIENCE IN THE SCHOOL YARD

Calling all schools to count the gulls in the school yard over the course of one day during Kaupapa Moana, Seaweek (March 7-11)!

Whether gulls are a common sight in your school yard or not, we would like you to participate, as absence is

important data. This study is designed to understand where different species of gulls are hanging out and why, so that we can reduce the negative interaction between humans and

gulls. Do gulls have the behavioural flexibility to adapt their foraging behaviour to human time schedules when beneficial? This programme is a great way to engage students in a citizen science project without leaving the school yard. Resource material will be available to help with species identification and further study. Students are also encouraged to design a poster to educate others not to feed the gulls.



When: Choose a school day during Sea Week (March 7-11)

Where: Your school yard

Book: register your interest with education@albatross.org.nz

Price: FREE

Resources:
www.albatross.org.nz/education/educational-resources/

Staff support available on request



Save The Otago Peninsula (STOP) Inc.

Both walkers and dogs have been enjoying using the Future forest loop walk from the end

of Bacon Street. This is a good, signposted, alternative to the Hereweka Hike which, like other events, had to be canceled this year.

We are looking forward to the fencing of the second tributary on the Smiths Creek catchment at the end of February, so that planting can take place this winter.

In the meantime, volunteers are carrying out the all important releasing of seedlings planted in previous years. The surrounding grass is extremely high this year, but at

least the occasional rain has resulted in great growth of trees in the Future Forest.



Regular working bees, with any necessary tools provided, meet at the end of Bacon St in Turnbolls Bay (the next bay past Broad Bay) every Tuesday and Sunday at 9.30am.

We are also looking for volunteers to help with some small scale construction work.

Contact: Email stopincsoc@gmail.com or text (only) Lala 027 8756 020.

— Lala Frazer

Otago Peninsula Biodiversity Group

WHAT IS HAPPENING WITH THE POSSUM?

There has been an increase in community catches and sightings of possum over January and early February. It could be for the following reasons: possums are moving around looking for fruit and new mates or possibly they are moving closer to the water where there is a cool sea breeze. So, this is a good time to set your traps with something different from apples. Other ideas can be possum dough, peanut butter, jam, toothpaste, or mayonnaise. If you have a fruit tree, as soon as your fruit is finished, it's an important time to set your trap, ready for when they return to find that much loved fruit.

If you have a possum lurking and would like to try our backyard trap, called a Trapinator, that lends itself to a gourmet of treats, please get in touch.

—Paula Cross

021 242 4944 • peninsula@opbg.nz



POSSUM REPORTS

If you see a possum—dead or alive—we want to know about it. Send your **possum sighting reports** to Brenda: possums@opbg.nz.

Invasive Weeds Update from SWAT

CFC ALERT! Please continue to keep an eye out this month for the distinctive brilliant red flowers and shamrock-looking leaves of the Chilean Flame Creeper (CFC). By now it may have finished flowering and will have blue berries which birds love to spread around.



The main infested areas are around Pukehiki but we have found a couple of outlying plants in Broad Bay. You might see it flowering on road verges or at the edges of bush blocks while you're out walking the dog. It's an invasive climbing perennial fine stemmed vine. It climbs into the canopy of our native bush where it blocks light and smothers and kills trees. Very hardy and extremely difficult to kill, we're lucky it is not

widespread yet. If you spot some CFC email us at SWATweeds@gmail.com.

After a short break over summer the SWAT team is back tackling invasive weeds on the peninsula. Our current priorities are CFC and outlying/isolated areas of **Banana Passionfruit**. We had a successful visit to Pudding Island to remove Banana Passionfruit and are due to go to Goat Island again later this month. Both of these islands are important stepping stones for birds traversing the harbour so it is important to keep the native trees there from being strangled by invasive vines.

Have you any invasive weed questions for us? Seen something suss and weedy on your block? Email us at SWATweeds@gmail.com for help and advice!



Seaweed Encounters at the NZ Marine Studies Centre

Join scientists from the NZ Marine Studies Centre and Our Seas Our Future for this special tour! Find out what makes kelp vital for ocean health with a series of short talks, before getting hands on with our local seaweeds and marine animals. Learn about a range of different local seaweeds and have up-close encounters with live animals that depend on seaweed for survival, while discovering how you can be kaitiaki for the coast.

\$5 from each ticket will be donated to Our Seas Our Future. You can read more about their mahi here: <https://www.osof.org/>

Date: 27th Feb

Times: 10.30–12pm, 1pm–2.30pm

Price: Adults \$20, children \$15



Book here: <https://events.humanitix.com/seaweed-encounters-at-the-nz-marine-studies-centre-7f60gj23>

Portobello Police Station

Tēnā koutou katoa,

I hope you all had a relaxing break and are refreshed for the year ahead. With COVID-19 knocking on the door I guess it will only be a matter of time before there are cases down here. I have done some checks and it is pleasing to see all of our businesses down here have their fingers on the pulse when it comes to doing the right thing. If we all do our bit, it will hopefully keep us in good shape and minimise the risk.

It's February already and our kids are all back at school and kindy, so I think it timely to remind you all to take great care when doing drop-offs and pick-ups. Our precious tamariki don't think like us and are unpredictable around roads.

Unfortunately, we have had a bit of criminal activity in the last couple of weeks. The Albatross Centre was broken into by some very determined thieves, and a boat was broken into that same night at the Ōtākou wharf; I believe they are linked, however investigations are ongoing. If anyone has any information that may assist, please contact me.

Some great observations from some locals at Harington Point on Waitangi Day resulted in a driver being processed for drink-driving. Multiple calls were received about this vehicle being driven poorly (to say the least). This resulted in a plan being put into place and the driver being taken off the road before they caused devastating carnage. Many thanks to those who phoned in and contributed to keeping us all safe on the roads.

Recently we had two cars over the bank and into the harbour, and also another crash that could have gone the



same way. Two of the crashes happened on Portobello Road, on the MacAndrew Bay side of Rosehill Road; virtually in the same place. Speed was not a factor in these

crashes. Fortunately, there were no injuries. The weather had been so humid and warm prior, and then we had a lot of rain, this causes the oil and diesel to seep up from the tarseal and makes the road very slippery.

These factors combined with the fact that they happened just past the new

road meeting the old. The old road has considerable flushing, smooth shiny bitumen on it and not as much grip/chip that the new road has. This is a contributing factor so please take this into consideration when driving. There was also a crash at the Doon Street/Portobello Road area in Vauxhall which has the same issue.

Remember, if something is happening now and requires immediate police attendance call 111. If something has already happened and is not so urgent call 105 to make a report.

I am going to be focusing (not entirely) on driver distraction for the next while. Driver distraction is a major cause of crashes statistically. It only takes a split second of inattention to change yours and the lives of others forever. So please be vigilant and pull over if that phone call is so important that it can't wait until you get to your destination.

Until next time, take care of one another and remember, my door is always open for advice or just for a cuppa and a chat.

—Sr. Constable Aaron Smith

Otago Peninsula Museum



OTAGO PENINSULA MUSEUM
& HISTORICAL SOCIETY INC.

17 Harington Point Road, Portobello, Dunedin 9014

Another year and life at the Museum carries on as usual. The Tuesday working bee volunteers were keen to get started on their projects again after the Christmas break so it's all go down in the Barn again. There are always some treasures that turn up as well to work on.

Our book, Portobello - A brief history, is still available at the Portobello Store for \$25. Thanks to the Store for supporting us with this.

Our new Sunday volunteer roster, starting in March, will be out soon. If you would like to help then please get in touch. Thanks to Diane who has volunteered, and to Ness who has stepped down.

We are open every Sunday 12.30pm till 3.30pm, Adults \$2 and children are free. Come along and support our Museum, you will be surprised at what we have.

Otakou Golf Club

The big yellow AED box has now been fitted to the clubhouse, please note the instructions for use:

1. Phone the emergency number, 111, and give your location
2. You will receive a code number which has to be entered on the keypad to unlock the box
3. Retrieve the AED device and follow the instructions

And let's hope you do not need to use it.

Work on the new tee box signs is progressing, some have already been delivered and plans are underway to have them erected on the course. Some Ladies tees are still available, as are the concrete water tanks, so please contact the club secretary if you are interested in sponsoring one.

You will notice that the potentially dangerous pine tree at the entrance to the club has gone. The next on the list is the leaning tower of Ōtākou on # 1/9 fairways.

Here is some Finance news : For those who have not yet paid – membership fees are now due.

We are fortunate to introduce a number of new members. Please take time to welcome them to the club.

And here is a date for you: Saturday 19th February starting at 3pm when we intend to hold another 'Social Saturday' session for new members and potential members and members partners consisting of a short five or six holes on Saturday afternoon followed by a cheese and wine session just like last year. Lets have your names so we can get numbers, and get the event organised.

We hope to shortly announce the date of the annual match with Waikouaiti Golf Club held this year here at Ōtākou. You do not want to miss it. Details to follow.

Last week our competition was for the Tom Fitzgerald Trophy which was won by Neil Seaton. Tom was a Harwood resident and a regular member of the club. You might know him better as Plumber of this Parish. He is still well remembered by some of his contemporaries who are still members.

Seaton - Now there is a name synonymous with this area, what will we learn of that family in the next publication?

Hit'em Straight!

Portobello Bowling Club

Situated 5 Sherwood Street. New Members always welcome. Bar & kitchen facilities for all types of functions, including full-size billiard table.

Contact Secretary, Brian Cameron, 478 0816 or email pbo26@xtra.co.nz for further information

SEASON PROGRESS

Club monthly tournaments have been very successful with a full green on each occasion.

Annie Haggett Cup—This annual match between Macandrew Bay and our club was played and won by Macandrew Bay

Twilight bowls—Played on Thursday evenings, has been very successful and a great, fun way for new members to learn the game. Social members can play in this competition.

Closing day is scheduled for Saturday 2nd April.

Portobello Presbyterian Church

Services for February to April:

- 6th Feb 1000am
- 20th Feb 1000am Communion
- 6th Mar 1000am
- 20th Mar 1000am
- 3rd Apr 1000am
- 17th Apr 1000am

Vaccination Pass required along with any other mandated Covid-19 rules applicable.

Church located on hill next to Cemetery on Harrington Point Road, Portobello.

Another Day In Paradise—from Olly's Pen

Kia ora koutou ma – what a wonderful job the Otago Biodiversity Group are doing, ngā mihi to you all - many thanks. The same mihi goes out to everyone involved with making our environment safe and one we can feel proud of. I acknowledge the fine contributions so many volunteers make in the many groups protecting and beautifying our unique peninsula. Whoever you are, young and not so young, many thanks. I know that many of you do it as a work of love. I remember my mother saying to me after I graduated as a Teacher, “If you really want to help people Son, work with those full of hate and anger”. She believed, as I do now, that the only energy/spirit that can heal and bring about lasting change is love. She explained that hate is simply love trapped inside, and encouraged me to help them find ways to let it out. I was a ‘tamaiti totohe’ (an incessantly curious child). However, my parents and many others from different iwi took the time to explain things for me. I was full of ‘why’s and how’s’. Like the word Love - It’s such an easy word to say, yet many of us, including

prominent academic & scientific minds, have trouble defining and demonstrating it in our personal lives. My take on it is this: In this world of time and space, experiences constantly change, affecting us in depth and understanding through conscious awareness. For that reason, only we as individuals can know its complex nature as it affects us at different phases of our lives. What we can say with confidence is: love changes us for the better and positively affects others. We are so fortunate to have Peace and Conflict studies at our University, this excites me. Love & peace are partners – they posit the challenge ‘to find ways of being with one another even though we might have opposing beliefs and opinions.’ That’s what evolution is all about in my humble opinion. And it’s what makes paradise so alive and well. Ma te rangimarie me te aroha koutou e manaaki – may the experience of peace and love bless you all.

—Olly Ohlson

ANCIENT MAORI PHILOSOPHY—MAURI HAUORA and Te Reo

Enrolments are open for the next class. MAURI HAUORA is based on the wisdom of the elders who realised that love is the most significant energy that can bring about positive change in the environment, in people and in all things animate and inanimate. The Tohunga captured this understanding in a tukutuku pattern, the Patiki - the pulse of life. They learned that balance is temporary – that each generation brings new vitality and knowledge into being - that the body dies but the essential YOU – a spirit/energy/mauri – lives on in the atmosphere – the database/network of potentiality from which we can learn. It challenges us with its core belief that All humans are PERFECT. Sessions begin 7pm Tuesdays starting March 8 at our home in 774 Harington Point Rd and are two hours long over 6 weeks. Te Reo is basic – at conversational level. Total fee is \$500. Inquiries are welcome.

Call **4780 220** or email me at: **esp10@gmail.com**.

Olly Ohlson - Kaiako & Tohunga Mauri Hauora

Do you know ten of your neighbours by name?

In a disaster, most people are rescued by those who are there at the time. Your neighbours are your first source of support and it’s important to get to know them now rather than later. In an emergency, knowing a few people on your street will help to:

- Make sure everyone is looked after, especially those who might need extra help.
- Share resources and skills to help each other– three families cooking on one BBQ uses a lot less gas than three families cooking by themselves.
- Support each other through difficult times.

Even better, you’ll be helping build a friendlier, more resilient community every day of the year.

From <https://www.getprepared.nz/households/meet-your-neighbours/>

Ric's Galley Takeaways

Summer Hours

Wed, Thurs, Fri, Sat, Sun 5pm — 7:30pm

A choice of five varieties of fish every night with local favourites Blue Cod, Monk, Tarakihi, Sole, Elephant, and fish bites

Gluten-Free Baked Blue Cod

Phone 4780 105 to order

Vegetarian and Seafood Baskets available

Try our Latham Bay Burgers

Fish, Meat, Chicken and Vegetarian and Beautiful Rib-eye Steak & Egg Burgers

Also, deep fried cheese rolls, spicy chicken tenders, sugar coated pineapple rings

All fish and Chips are not salted but can be if you ask.

eftpos payWave available

**'Proud supporters of the
Otago Peninsula
Community'**

LEADING
⚡

ELECTRICAL

• DUNEDIN •
NZ

**'We are your One Stop Shop
for everything Electrical'**

0275505022

enquiries@leadingelectricaldunedin.co.nz

PORT TO PORT CRUISES & WILDLIFE TOURS

FERRY

PORTOBELLO TO-
QUARANTINE ISLAND
OR PORT CHALMERS
-1:15PM (RETURN AT 3:15PM)

-TO BACK BEACH
ADULTS \$24
CHILDREN \$12
RETURN

-TO CAREYS BAY
ADULTS \$32
CHILDREN \$20 RETURN

WILDLIFE CRUISE

1:15PM-3:15PM

ADULTS \$90
CHILDREN \$46
INFANTS \$20

CYCLE FERRY

PERSON \$12
BIKES-MANUAL \$5
ELECTRIC-\$10
EACH WAY

BOOKINGS ESSENTIAL
020 416 24250

FAMILY OWNED - WILDLIFE- HARBOUR FERRY
WWW.PORTTOPORT.CO.NZ

Dear Peninsula people!

We hope that this year you will again be able to come and enjoy the work of

OPEN ARTS INC

The Otago Peninsula Artists
as they present their annual

**ALMOST AN
ISLAND**
EXHIBITION

MACANDREW BAY HALL

APRIL 7-18

10-4 DAILY

OPENING EVENING APRIL 6

5pm-7pm (Awards at 6pm)

LIMITED NUMBERS - VAX PASSPORTS
REQUIRED)

New Year - New Home?

So many amazing homes for sale, please contact me today for further information.



21 Winifred Street
\$439,000 +



68B Ascot Street
\$465,000



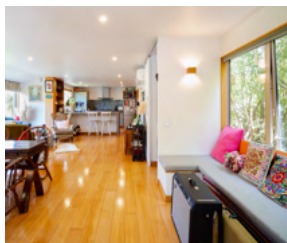
17 Orr Street
\$599,000 +



3 Highcliff Road
\$649,000 +



47 Russell Street
By Negotiation



37A Middleton Road
By Negotiation



133 Musselburgh Rise
By Negotiation



77 Greenock Street
By Negotiation



027 929 1174
alicem@bayleymetro.co.nz
www.bayleymetro.co.nz



Alice Munro

Number of properties sold
in January 2022:

11

SAVE THE DATE

Wild Dunedin
Ōtēpoti Mohoao

NZ Festival of Nature
22 - 28 April 2022
www.wilddunedin.nz

Photo: Izumi Schmidt Uchida.

Instagram Twitter Facebook

Otago Peninsula Massage

Katherine Cooke

Katherine is a very experienced therapist who has treated hundreds of people from all walks of life. She is passionate about helping people become pain free through massage therapy and will work with you to achieve your mobility goals.

SERVICES HALF HOUR

Half hour appointments are for repeat treatments of single limb or joint injuries.

FULL HOUR

Full hour appointments are for any back or neck pain and for multiple injury sites.

FIRST APPOINTMENT

Your first appointment will be for a full hour. A history will be taken, Katherine will assess and treat you within this appointment.

Email or phone today to book an appointment.
otagopeninsulamassage@gmail.com
0274783337



Otago Peninsula Massage
0274783337
Experienced remedial massage therapist

Steady As You Go® & Tai Chi

Age Concern Otago

Margaret ph 479-3052



STEADY AS YOU GO® AND TAI CHI

FRIENDLY CLASSES DESIGNED

FOR MEN AND WOMEN 65+

Improve your:

- Balance
- Leg strength
- Flexibility
- Mobility
- Coordination
- Spatial awareness
- General fitness
- Well being
- Social connection!



Steady As You Go®

Portobello

Coronation hall,

Portobello Rd.

Monday 10 am

Contact Christine 478-0878

Or Faye 478-0739

Tai Chi

Portobello

Portobello Bowls Club,
Sherwood St

Thursday 1:30 pm

Contact Jean 478-0194

Orma 021-207-3079

Supported by the Marjorie Barclay Trust

Painting the Peninsula

All aspects of interior and exterior painting.

One room or your whole house,
we can do it all.

Your local painter on the Peninsula
with 15 years in business



Call now for a free quote

0274 937 663

Access Property Services Ltd

cliff@accesspropertyservices.co.nz



Mon
evenings

between
6.30pm – 7.30 pm

Are you a keen ukulele player looking for others to have a jam with? We're a group of enthusiastic uke players who meet at Broad Bay on the Otago Peninsula each week. You don't have to be an experienced player to join us - play as much or as little as you want. You don't even have to live on the peninsula - it's a lovely drive from Dunedin city!

We are a friendly bunch and welcome new members and song suggestions!

We meet at our group leader's house. Just contact us for the address:

Facebook: www.facebook.com/ThePUGsNZ/

Email: thepugsnz@gmail.com

7 Harington Point Road
Portobello,
Dunedin

LUNCH & DINNER
1908
LICENSED RESTAURANT

Bookings: 1908cafe.co.nz
Email: hello@1908.nz
Telephone: 03 478 0801

OLD WORLD WARMTH AND CHARM IN A HISTORIC PORTOBELLO CHARACTER BUILDING.

New owners. New logo. Same fantastic food, service and cozy atmosphere.

OPEN FOR LUNCH

Wednesday to Sunday from 12 Noon to 2pm

OPEN FOR DINNER

Wednesday to Sunday from 5.30pm to Close

Extended opening hours over summer,
please call or check website



853 Portobello Rd. Portobello.
Shop Hours : Thursday 5.30pm - 9.00pm
Friday - 5.30pm - 9.00pm
Saturday - 8.30am - 1.00pm

Kevin Hollamby, Director.
Kev@rodgun.co.nz
M: 022 Huntr NZ



ROD & GUN CO. LTD.
PURVEYORS OF FINE PRODUCT FOR THE DISCERNING SPORTSMAN, since 2000.

Peninsula Plumbers

2004 Limited

Contact Reuben

0274 144 741 or A/H 478 0764



Toilets



Taps



Laundry



Kitchens



Bathrooms



Alterations



Maintenance

'A local plumber for local people'

Landscape & Garden Design

- Beautiful & functional landscaping
- Planting & advice for easy care, flourishing gardens

*New Build Homes
Garden Renovations
Commercial Landscaping*



Leisa Browne, Manager
(03) 470 1114 / 027 415 6555
design@leaflandscapes.co.nz
Lower Portobello
www.leaflandscapes.co.nz

Leaf
LANDSCAPE
DESIGN

Peninsula-
grown plants
for sale

Pilates at Portobello

5.45pm-6.45pm Mondays @ Portobello Coro Hall

Fully internationally qualified and experienced Pilates Instructor



- Get your body moving correctly
- Increase strength, flexibility and muscle tone
- Help prevent osteoporosis and falls
- Improve core and pelvic floor strength
- Decrease pain and tension
- Feel relaxed and well
- Breathe correctly (very important for many reasons)
- Have fun and give your body some new challenges
- Take some time out just for you!

Come along and join our relaxed and fun movement class. Everyone is welcome, we have a mix of ages and abilities in the class and most conditions/pain/injuries can be worked with so please call/email me if you would like to know more

Term 1 runs until mid-April

\$130 for the term (10 weeks) • \$16 casual rate – come and give it a go!

Penny

Ph. 027 464 9180 • pennykershaw@gmail.com

portobello area community resources

BOOK A LOCAL HALL

- **Coronation Hall, Portobello**
Wayne Cameron - 4780 424
- **Scott Hall, Harwood**
Graeme McNulty - 027 931 0342 or
Robert Oliver - 021 893 441
- **Hoopers Inlet Hall**
Jackie Clearwater - 4780 508

PORTOBELLO LIBRARY

The Library is open on Thursdays and Sundays, 11am–1pm at Coronation Hall, Portobello. If you are wanting to join, it costs \$5.00 per family, and nothing thereafter except for 20 cents per book to take home.

BOOK BUS

The Dunedin Public Library **Book Bus** visits the Peninsula every Wednesday. At Portobello School 9:45-10:15, in front of the pub 10:15-11, and at Broad Bay School at 11:15-11:45.

PENINSULA TOY LIBRARY

Our **Toy Library** is open every Sunday morning from 10:30–12:30. We have a wide variety of toys, puzzles, games, dress-ups, and ride-on toys. At the Portobello Domain Pavilion, Allans Beach Road.

PENINSULA MEDICAL CENTRE

12 Allans Beach Road, Portobello
4780 880

BADMINTON CLUB

Badminton Club plays Sundays at 7:00pm, Coronation Hall. new members very welcome—come along and give it a try! We have club rackets for new players to use. Any enquiries phone Geoff on 0275 784 758.

DEFIBRILLATOR

There is an **Automated External Defibrillator** located outside Portobello Store (1 Harington Point Road).



HOT WATER URN RENTALS

We have two **20 litre Water Urns** available for community use. If you wish to use these for an event, email pbocomm.inc@gmail.com. All we ask for is a donation.



LOCAL PHONE BOOK

478 Local Phone Books are available for purchase at the Portobello Store for \$10.

SWIMMING POOL

Our community **pool** is closed to the public this season due to COVID-19 restrictions. See you next season!

Want to help our little community be an even better place to live?

JOIN PORTOBELLO COMMUNITY INC!

We are looking for keen community-minded people to keep this long-standing group active and vibrant. Some of our wonderful projects have included:

- Heritage walk
- Bluestone kerbing, period streetlights, and flower boxes in the village centre
- Seasonal Market Days
- Paddock Pursuit
- Local clean-up days
- "Pirate Ship Playground" at Latham Park
- Major fundraising for the Jetty
- Installing a Defibrillator
- This newsletter
- and more!

Everyone is welcome, but we'd be especially grateful for folks with the following skills:

- Graphic design
- Social media whizzes
- Grant writing/fundraising
- Carpentry/handyman
- Event planning
- Showing up & helping

We meet **7:30pm on the third Tuesday of each month** at Portobello Coronation Hall
Next meeting—**16 March** (Note that we will probably meet online due to COVID)
Can't make the meetings but still keen to help? No worries! Contact us at
pbocomm.inc@gmail.com