

portobello news

OUR HOME BY THE OTAGO HARBOUR

FEBRUARY-MARCH 2025

Just before the holidays, representatives from our local community groups met to discuss the upcoming Sustainable Peninsula initiative and how we might get involved. A common theme across many of our groups was the importance of connecting and engaging with local volunteers. It was noted that people who want to participate don't always know what kinds of opportunities are on offer, and those who *do* turn up might not know what to expect. So here's a quick rundown of the kinds of opportunities our groups have on offer:

Physical labour. The Otago Peninsula is a unique natural environment, and caring for it often requires hard graft. If you're keen to dig a hole, lift a rock, or push a wheelbarrow, groups like STOP, SWAT, or OPBG are always in need of extra hands. Organisations like Quarantine Island Kamautaurua and the Peninsula Museum have precious old buildings that are in constant need of maintenance.

Raising and managing money. Have experience with accounting? Know how to write grants? Or just good with the family budget? *Every* non-profit group needs to find funds and judiciously manage what they do have. People who can wrangle a spreadsheet—your skills are *very* valuable!

Planning events. Much of the community fundraising that our local groups do comes from events—quiz nights, clothes swaps, raffles, fairs, markets, concerts, movie nights, and so on. Setting up an event can require selling tickets, arranging venues, setting up, and all the manaakitaka required to welcome everyone into your space and make sure they have an enjoyable time.

Promotion and social media. Getting the word out about what the group is doing and the events they are running is a special skill. Always needed.

Lending a hand. Some people are more inclined towards “every once in a while” rather than “show up every week”—and that's fine! Something as simple as setting up for or cleaning up after events is so appreciated.

Just being present. As the old saying goes, “80% of success is just showing up.” Volunteer groups are always happy to welcome interested folks even if they aren't include to become active participants right away. Connecting with others is both a path to finding the kind of volunteering that works for *you*, and is an important and valuable action in and of itself. Come and chat.

Real, physical connection to your neighbours is as essential to your health as food and water*, and is a great antidote to whatever Silicon Valley algorithm is clogging up your phone today. Communities need real relationships to flourish, and volunteering is an ideal way to build them.

In 2025, the cost of living makes it almost unheard of for young families to get by on a single income, and we just don't have as much free time left as we used to. But people sharing the time they *do* have is still the lifeblood of our community groups—and is needed more than ever.

Contact information for many of our local groups can be found inside each issue of this newsletter or on our new portobello.org.nz/volunteer page. We'll do our best to keep you connected to current needs and opportunities.

A quick word about volunteering

* An example: Recent research has shown that those connected to their community have 32% lower risk of stroke, 50% of dementia, and 29% lower risk of early death than those socially isolated. [Source](#).

portobello market day

sunday 30 march 10am-2pm
coronation hall

tables \$25 • register at portobello.org.nz



Portobello Community Inc. Update

CHAIR'S MESSAGE

Kia ora koutou,

Hope you're all having a glorious summer. It's the warmest day of the year so far as I type this, and we just returned from a family tour of the Marine Studies Centre followed by the judging of the Spud in the Bucket competition at Portobello School (where one of our family buckets somehow walked off with the "most potatoes" prize... go figure!) and an ice cream at the Portobello Hotel. A good day in our wee village.

Portobello Community Inc. is warming up activities for 2025, with planning underway for a few more events. Our Christmas market day was a success, despite squally weather that crossed over precisely as the market started. Fortunately, we had enough room for everyone inside. We will be holding our next Market Day on 30 March, so reserve your tables now.

Planning for the upcoming Anzac Day commemoration is also under way. If you or someone you know are interested in speaking at the event, contact us via email at pbocomm.inc@gmail.com.

We were pleased to be included in an initial planning meeting for the Sustainable Peninsula initiative (read more on Page 9), and look forward to strengthening our ties to other community groups across the Peninsula.

Another small positive outcome from that meeting: Thanks to Paula Cross for offering us the use of the Biodiversity Hub hui room as a meeting space, and you'll find our monthly get-togethers there from now on, 7:30pm on the third Wednesday of each month.

Kā mihi nui,

Michael Lascarides

President, Portobello Community Inc.

Portobello Community Inc is now on Instagram! [instagram.com/portobellonz](https://www.instagram.com/portobellonz)

portobello community inc.

President

Michael Lascarides

Treasurer

Amy McFadzien

Secretary

Laura Shepard

Newsletter Editors

Michael Lascarides & Laura Shepard

Committee

Sandra Clearwater, Ruth Seeney,
Richard Steentjes, Dan Parker, Ryan Adams,
Elliot Dixon, Jamie Ledbetter-Taylor

*The views expressed in this newsletter are those of
the contributors and not necessarily those of
Portobello Community Inc.*

ADVERTISE WITH US

Portobello News is created and delivered by volunteers in print to 500 letterboxes on the Peninsula, and read by another 300 people online. The cost of printing has skyrocketed recently, so your advertising support helps us keep going!

Contact us at pbocomm.inc@gmail.com for rates and information.

**Want this newsletter by email?
Join our mailing list at
portobello.org.nz/contact**

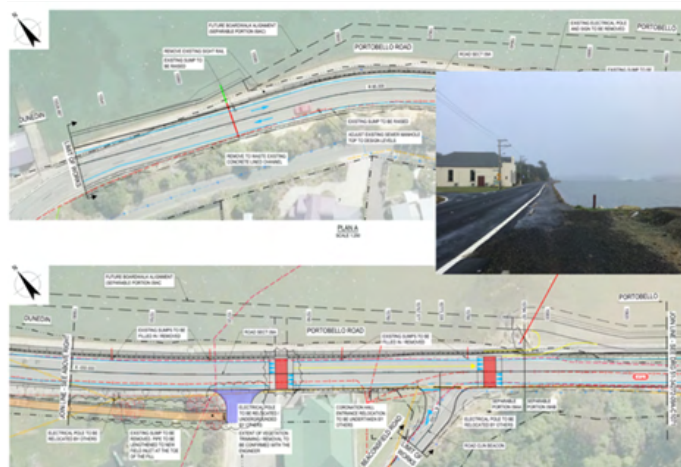
Updates from the Otago Peninsula Community Board

Ngā mihi o te tau hou – happy new year to you all.

It seems a long time since the Christmas and New Years break when we were opening presents, greeting family and complaining about the indifferent weather. Like many of you I've been back at work since early January and the month seems to have slipped by at a rapid rate.

IN THE WEEDS

I'm not going to beat about the bush (sorry poor pun) but the state of the plantings along the Portobello Road and other parts of the Peninsula are frankly abysmal. Couple that with the cutbacks to City Council grass-cutting and the Peninsula has looked shabby. Despite letters to the paper, emails to Council and many residents contacting the Council's Customer Service Agency nothing seems to have filtered through that residents here are unhappy at the level of service we are receiving. For me, the horticultural maintenance has several issues. Firstly, the amount of money spent on landscaping seems wasted if it can't be maintained to a standard. Secondly, it's a poor look for our region for locals and visitors alike. Finally, if it's regarded as a cost-saving it's a false economy because to get it back into some semblance of control will cost twice as much.



PORTOBELLO BOARDWALK – 2025/2026

In news of a more positive light the long-awaited boardwalk section at Portobello is due after July 1st, 2025. This section will connect the old cannon site to near the Boat Club building in Portobello and is a welcome addition to a very problematic area. The Board can't give an exact date when the construction will be—update you soon

LONG TERM PLAN

Over the year, the Board has undertaken considerable consultation to gauge the needs of the community so that it can be built into the City Council's nine-year plan for 2025-2034.

By far the biggest and most important thing for the Otago Peninsula is the completion of the final 3 stages of the Peninsula Connection. These are:

- Ellison Road to Ōtākou Fisheries Wharf
- Tidewater Drive to Ellison Road
- Portobello School area on Harington Point Road.

At this stage these three parts of the project have been included in the Draft Plan for consultation with the public. For this to be realised and included in the budget it's imperative that the community engage with the consultation period and submit in writing or in person to the hearings. The more people that do this the

stronger our case is to get these changes over the line. Think about how your child gets to Portobello School or how the road near the Fisheries is so narrow and dangerous.

That process begins in the next few weeks. I ask all residents to engage with this process and have a say in the future of the area. More information soon.

FACEBOOK

Please take the opportunity to use it if you can and share information with your friends, neighbours and whānau.
<https://www.facebook.com/pencomboard/>

— Paul Pope, Otago Peninsula Community Board Chairman

paul.peninsula@xtra.co.nz
(03) 4780630 or 0274668446

Portobello Fire Brigade

WILDFIRE READINESS AND PREVENTION

Well, our summer weather this year has been changeable to say the least.

The amount of rain we have had has kept everything greener than usual, which is good for wildfire prevention, but there is still an increased risk as vegetation starts to dry out in our area. This is the reason that we are currently in a Restricted fire season.

The risk and impact of wildfire is increasing in Aotearoa New Zealand due to climate change, but also how and where we are living. The frequency of wildfires and number of significant wildfires are on the rise in Aotearoa New Zealand – with many happening in the shoulder months rather than the typical higher risk summer period.

Large wildfires like the 2017 Port Hills, 2019 Tasman, 2020 Lake Ohau, 2021/2022 Waiharara fires, are occurring every 1-2 years, resulting in significant impact and losses. In addition, many of these significant wildfires are happening in the shoulder months rather than the typical summer period.

Key stats

- Approx. 3% of wildfires cause 95% of the area burnt.
- 97% of wildfires are caused by people in New Zealand.

Key Messages

- Avoid using machinery in hot, dry and/or windy weather or when the Fire Danger is Very High or Extreme.
- Avoid using any vehicles off road or near dry vegetation in hot, dry and/or windy weather or when the Fire Danger is Very High or Extreme.
- Always set up your gas cooker on a stable surface and well away from anything flammable – like long dry grass.
- Spot the signs, stop wildfire.
- Know the risks and always check the local fire danger at checkitsalright.nz



FIRE BRIGADE QUIZ NIGHT.

We had a very successful quiz night and raised \$4, 000. We would like to thank all our generous sponsors who helped make it a very enjoyable night.

We will be scheduling this year's quiz back to September this year.

1ST RESPONDER VEHICLE PROJECT

We are on track with our fundraising and have received several very generous donations towards our ute and building.

With the current financial situation, our project will take longer than first anticipated.



FIRE SEASON

The Otago Peninsula is in a Restricted fire season, which means a permit is required for all outdoor fires, but you still need to do this safely.

If you are unsure, please go to the website www.checkitsalright.nz

If you have any fire related concerns, want some advice, or would like a free home fire safety visit please give either Greg or myself a call:

CFO Jamie Ramsay 027 481-3075

DCFO Greg Dickson 0210 226-5233

Stay safe out there and if you see fire or smoke that you are unsure about, call 111.

Ngā mihi,

— Jamie Ramsay, Chief Fire Officer, Portobello Volunteer Fire Brigade.



Portobello School

Portobello School has started the year well.

Staffing: Kate Butterfield Reese (Whaea Kate) started in Room 4 and is our permanent principal release teacher, working alongside Tom Hobbs. We have Candace Christensen and Margaret Fruean working in Junior Whānau, Cheryl Agnew teaching in Room 3, and Ross Bennett (Matua Ross) working with the year 5 tamariki in the mornings Monday to Thursday. Jordan Osten, a 3rd year College teacher, is also working in Room 3.



Tech at Tahuna: The Year 7 and 8 students started Tech at Tahuna Intermediate. This is our second year working with Tahuna.

Just Swim: Just Swim swimming lessons took place in the first few weeks of the term. It is great to be able to offer the lessons by Just Swim in our own pool.

Beach Education: We had our Beach Education day on Tuesday 11th of February. The school took a bus to St Kilda Surf Club, spending the day at the club and the beach.

Hot lunches: Our toasted sandwich makers and pie warmer are proving popular with our senior students managing this for anyone who wants a toastie or a hot lunch from the pie warmer.

Chickens: Our chickens spent the holidays enjoying their new home. Thank you to the many whānau who helped out with feeding, cleaning and caring for our chickens. They are laying well with usually six eggs a day.

Kā mihi,

Tom Hobbs, Principal



Community Food Pantry

Thanks to the Lions Club, we now have a community pantry for sharing kai, located by the Portobello School lower parking lot. Take a little, leave a little, as you need or wish!

7 Harington Point Road
Portobello,
Dunedin

LUNCH & DINNER
1908
LICENSED RESTAURANT

Bookings: 1908cafe.co.nz
Email: hello@1908.nz
Telephone: 03 478 0801

CLASSIC EUROPEAN FOOD WITH A KIWI TWIST. FULLY LICENSED WITH AN EXCITING NEW WINE LIST AND PLENTY OF ALCOHOL FREE OPTIONS.

OPEN FOR LUNCH

Wednesday to Sunday from 12 Noon to 2pm

OPEN FOR DINNER

Wednesday to Sunday from 5.30pm to 8pm

Extended opening hours over summer,
please call or check website 1908cafe.co.nz

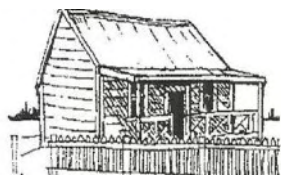
COURTYARD GARDEN - BABY CHANGE FACILITIES - EASY PARKING



Otago Peninsula Museum

Another year and it will be just as busy for our volunteer working bee members. Thanks again for your support. Thanks also to our great volunteers who open each Sunday.

We could not do this without your support. We have lost several volunteers but then have gained a few which is always a bonus. Our new roster starts in March 2025 and goes to March 2026.



**OTAGO PENINSULA MUSEUM
& HISTORICAL SOCIETY INC.**

17 Harington Point Road, Portobello, Dunedin 9014

The Museum is open each Sunday 12.30 till 3.30. Come along and check all the great things we have on show.

We are trying to get our Museum sign reinstated at the roundabout in Portobello. It was there before the roadworks began so we are very much hoping it gets put back.

Please try and keep the parking area outside the Museum clear on a Sunday for our visitors.

Our two very popular books **Portobello—A Brief History** and **Otago Peninsula Then and Now** are available at the Museum and the Portobello Dairy. \$30 each



For contact email:
theotagopeninsulamuseum@gmail.com

William Ogilvy Duthie and Grace Nicolson

William was born in Edzell, Kincardineshire, Scotland in 1853. When he was about 10 the family moved to the Shetland Islands where his father was an agricultural labourer. Later William met Grace Nicholson whose family were sea farers. Grace was born in 1851 in Easter Quarff in the Shetland Islands. Leaving the Shetlands, Grace and William travelled together on the same ship, the Christian

McAusland, arriving in Port Chalmers in December 1872. In February 1873 they were married and a month later William had secured a teaching job at Evans Flat, near Lawrence.

From 1875 he spent 13 years teaching at Highcliff School where he lived in the school house and reared the first of his 11 children (9 girls and 2 boys). In 1891 he

resigned and taught at Hoopers Inlet School until 1893. He then went to live in Ōtākou for several years but there is no record of him teaching at the school although some of the children attended. We do know he was living in the old parsonage that belonged to the Hon H.K. Taiaroa until it burnt down. William then moved to teach at Quarry Hills in the Waikawa Valley in Southland. Then, in 1905 he moved to Matauri Bay School in Northland. In 1906 William went to Auckland Hospital for minor surgery, but while there his health deteriorated and he died. He is buried in Auckland. Grace eventually moved around, living with her children who were scattered in various parts of the country. She died in Christchurch.

Whilst living on the Peninsula William was:

- Clerk to the Roads Board
- Highcliff Riding Returning Officer
- Clerk of the Licensing Committee
- Peninsula Rifles Volunteer – Captain of the Highcliff Company
- Secretary of the Peninsula Kilwinning Lodge No.69850
- Captain of the Highcliff Draughts team
- Ōtākou School Committee

William and Grace Duthie are the great great grandparents of locals Laurel Dunn and Brenda Cameron. Photo below right shows the 9 Duthie girls with Mary 2nd left—our great grandmother.



**'Proud supporters of the
Otago Peninsula
Community'**

LEADING
⚡

ELECTRICAL

• DUNEDIN •
NZ

**'We are your One Stop Shop
for everything Electrical'**

0275505022

enquiries@leadingelectricaldunedin.co.nz

**SC
BUILDING**

Email: samcrossbuilding@gmail.com

Phone: 027 232 8674

Phoenix on the Peninsula

**Professional Massage
Therapy in Harwood**

Over 20 years experience

www.phoenixclinic.co.nz

027 428 5295



Portobello Bowling Club

Come along and give bowls a try at
our Twilight Bowls social evening

Thursdays 6pm

Designed to cater for all levels.
New members are always welcome!

Keen to become a full member?
We have Interclub bowls, Tournaments,
and Club Championships.

We have Darts and Snooker (full size
billiard table) from 4pm on Tuesdays
(Thursdays during the winter).

The Club rooms with bar and kitchen facilities
are available for all types of functions.

For further information please contact
Brian Cameron, Secretary
03 478 0816 or
bjcameron47@gmail.com

OPBG Update—Living in a “Post-possum” Peninsula

The majority of possums, with only a few remaining on tricky cliffs, have gone! The few remaining might be a risk to future repopulation given a lot of time, but we expect even the last wily few will all be hunted down within the year. So we are essentially now living in our new post possum landscape!

What can we expect this summer, besides more flowers, fruit & veg in our gardens? And what do we each need to do to safeguard our biodiversity gains!?



WIN!! MORE BIRDS!

Reproduction will be more successful without possum predation at the nest AND there will be more food for birds young & old from more fruit on native trees. But growing populations of birds means more common Peninsula natives (like tuis, bellbirds, silver eyes, fantails, grey warbler, shining cuckoo, kereru, & pukeko, as well as the many more less common) AND also more exotics (like black birds, starlings & various finches including English sparrows) - which compete with native birds for food.



Action needed!

1. To support a growing native bird population we need to plant more food for them fast!!

Local food trees take time to grow (like kowhai, rata, totara and cabbage tree) so plant them AND also faster growing food ‘shrubs’ like kaka beak, flax, various coprosma.

2. With the bird flu pandemic literally on our doorstep & threatening our native species we need to control exotic birds that are big vectors for spreading disease. The virus is

spread fastest by species who roost or nest together. Locally two threats are starlings & English sparrows which amass in nightly roosting spots. The English sparrow population is growing & they already threaten native birds (and humans!) as they carry salmonella. They can transmit this drinking from sugar water feeders (a photo of this in NZ Geographic story on our imminent bird flu risk). To protect native birds from transmission of disease, watch for sparrows on your sugar water feeders & change them to ones that

don't give easy perches for sparrows. To control their population also don't feed English sparrows seeds & food scraps.



MORE RATS?

Because there is more fruit & berry food around, rats (& mice) will capitalise on this, growing more numerous & perhaps even bigger (there have been many reports of enormous rats this winter on the Peninsula).

Action needed!

1. Keep setting traps around your property & if you are catching a lot consider using poison.
2. OPBG is developing plans for community rat trap lines—please consider whether you will help volunteer to oversee one. We're also keen to hear about biodiversity changes you see on the Peninsula!



Watch this space for updates & actions for our new life post possum.

— Paula Cross, operations@opbg.nz

Regent Theatre Annual 24 Hour Book Sale

Friday 28 February & Saturday 1 March 2025, 10:00am - 10:00pm each day

The highly anticipated annual Book Sale for the Regent Theatre is once again in its bigger and better location at the **More FM Arena Edgar Centre, 116 Portsmouth Drive, Dunedin.**

Unmissable annual bibliophile's paradise.
More room to move around! Free parking! Mark your diaries now!

Introducing Sustainable Otago Peninsula

Kia ora,

On behalf of Te Rūnaka Ōtākou, Otago Peninsula Trust and the Otago Peninsula Biodiversity Trust, we would like to introduce you to the concept of a “Sustainable Otago Peninsula.” You may have received this invitation directly from one of the above organisations, your local school or another entity associated with the Otago Peninsula, so I apologise if you are reading this more than once.

The footprint for the Sustainable Otago Peninsula reflects what the Otago Peninsula Biodiversity Trust refer to as the whole Peninsula, from the headland to the coast, through to the guardians (Tomahawk, Vauxhall, Waverly, Musselburgh and Tainui) capturing the nine Otago Peninsula cluster of Schools. The boundary runs from Rongo Rock to the BP service station, down Queens Drive to the St Kilda Surf Club, the approximate location of the river that historically drained the Otago Harbour.

In the initial position paper, we have focused on the history and status of the Otago Peninsula. We have intentionally made no suggestions on what individuals or community may want from a sustainable peninsula, that is the purpose of the survey and community meetings.

Each of the Otago Peninsula Schools from Musselburgh to Portobello will be hosting a community meeting:

Tainui School–17 February
Macandrew Bay School–18 February
Andersons Bay School–19 February
Otakou Marae (Wharekai)–20 February

St Bridgid’s School–24 February
Grant’s Braes School–25 February
Musselburgh School–26 February
Tomahawk (Grants Braes AFC Clubrooms)–10 March
Tahuna Normal Intermediate–11 March
Portobello School–12 March
Pukehiki Hall–17 March
Broad Bay School–18 March
Bayfield High School–19 March

To assist us with our planning, please advise us via the survey which of the meeting venues you will be attending.

Your interests and welfare may span areas such as geography, communities, forests, farming, healthy environments, wildlife, or resilience within economics and food systems. The Sustainable Peninsula project would greatly appreciate 5-10 minutes of your time to complete this survey. Simply click the link (or scan the QR code) below this article to participate.

If you complete the survey you will be in the draw for a weekend of treats on the Peninsula including a night at Blimeys @ Roselle, dinner at Toroa Cafe, breakfast at Augustines of Portobello and wildlife tours at OPERA, Royal Albatross Centre and Blue Penguins Pukekura. An amazing weekend for two!

I look forward to meeting with you and exploring how we can collaborate to create a sustainable Otago Peninsula

— Hoani Langsbury, MNZM, BSc, PgDipSci.,
Ecotourism Manager Otago Peninsula Trust

[Click here \(or scan QR code\) to
take the Sustainable Otago
Peninsula Survey](#)



POP UP TRANSFER STATIONS Rural Skip Days

Portobello Domain | 23 February | 10am – 5pm

(Waste must not be left at the site outside these times)

Payment can be made by EFTPOS or cash. Please have the correct change.

NO LARGE ITEMS: i.e. engines, metals, tanks, metal drums, whiteware, demolition materials*, or large items of vegetation**

NO UNACCEPTABLE WASTE: i.e. hazardous waste, animal remedies, herbicides, medicines, medical waste, gas bottles, wire, asbestos or petrol tanks

NO LIQUIDS: i.e. liquids including oil

* demolition materials – the maximum size of demolition material is 1m in any direction. Material is to be clean and contain no asbestos.

** vegetation – no complete hedgerows or similar.

Fees apply. See website for details.



DUNEDIN | kaunihera
CITY COUNCIL | a-rohe o
| Ōtepoti

03 477 4000
www.dunedin.govt.nz

Portobello Library

Happy new reading year to everyone. Come along and join up to our special little library which is situated in the Portobello Hall. We are open Thursday and Sunday from 11am till 1pm. It is just \$5 to join and then 20 cents each book you take out. There is a great selection of books available.

Come and meet our Librarian, Dot.

Our AGM will be held in the Library on Thursday 6 March at 1.30pm. Your support would be greatly appreciated. It's the only meeting we have for the year.

Book Review: The Sparrow, written by NZ author Tessa Duder.

The author has dedicated the book to, "the memory of the women and girls cruelly and unjustly convicted, transported and imprisoned 12,000 miles from their homeland, to those that died, and those who against all odds, survived". The story could be typical of any of those women.

When the sailing ship Platina arrived in September 1840, it carried settlers who were there to establish Auckland, the new capital of NZ. It tells the story of Harry, travelling alone and desperately wishing he was back home. As the story unfolds it becomes clear that Harry is not at all the person he portrays. Where did he come from? What is his past? and why is he traveling alone?

I found The Sparrow to be an enjoyable and easy read, despite the misery and hardship endured by the settlers.

PORTOBELLO LIBRARY ANNUAL GENERAL MEETING

THURSDAY 6 MARCH 2025, 1:30PM

Coronation Hall, Portobello

Invasive pest plants update from SWAT

A Happy New Year to our readers from all the SWAT team! We took a break from our Friday missions over the Festive Season. A handful of very enthusiastic SWAT individuals still managed to work 206 hours(!) on Chilean Flame Creeper around Pukehiki, Darwin's Barberry at Sandymount and BPF at various locations during the break. Ka rawe!

2024 was a big year for our team with the ORC recognising our volunteer work by granting us funds to knock down Darwin's Barberry around Pukehiki (thank you to the ORC Eco Fund) and funds to clear Darwin's Barberry out of Sandymount (thank you to the ORC Site-Led programme). We've made a great start on both projects.

Another big highlight of the year was being asked by Maureen Howard in December to feature in an episode of her "Rewilding in Action" podcast series on Otago Access Radio. We had a wonderful morning out in the bush with Maureen and her recording gear at a Portobello property. Here's a photo of the SWAT members who were there that day. We showed Maureen how we deal with Banana Passionfruit.



We invite you to listen to Maureen, Fran, Moira and Adrienne on the Episode 9 SWAT podcast here: <https://oar.org.nz/shows/rewilding-in-action/>

Several Peninsula residents feature in other episodes in Maureen's podcast series including Peter and Anna Cooke with Shanta McPherson discussing Hereweka rewilding, Hoani Langsbury and Tūmai Cassidy discussing Buff Weka, John and Moira Parker describing their rabbit control work and Paula Cross talking about farming and bush regeneration at Seatons Bush. Have a listen!

This month SWAT starts work on Chilean Flame Creeper vine.

It's in flower now! Keep an eye out for it and report it if you see bright scarlet flowers with green shamrock like leaves.

If you would like advice or help controlling pest plants on your property or if you find Chilean Flame Creeper in flower, we would love to hear from you. Contact us by email at SWATweeds@gmail.com and we'll be in touch!

— Cheers from SWAT



Scan code, or book easily online www.porttoport.co.nz
Or call **020 416 24250** and press 1
for last minute bookings



TripAdvisor
Travellers' Choice Awards
Winner

Let expert Rachel and her team guide you.
Rachel has been conducting albatross &
wildlife tours on Otago Harbour since 2004.
And operating commercial boats since 2006.



CYCLE FERRY!

Cycle the Harbour Loop and catch the Port To Port Cycle Ferry between Port Chalmers and Portobello.

We can take up to 15 bikes at a time.
We load the bikes for you. Approx 10 mins

PASSENGER FERRY!

Otherwise if you are not cycling, you can visit Quarantine Island or cafes and pubs at Port Chalmers

One way or return after approx 2.5 hours.

Albatross, Wildlife & Harbour Cruise

Look for ALBATROSS, SEALS, SEA BIRDS, PENGUINS, SEA LIONS and much more!

The original Port To Port specialty!
See our reviews on **Trip Advisor (Port To Port Cruises and Wildlife Tours)**

Quality binoculars, wildlife identification sheet.

-Approx 1.5-2 hours-
Locals discount available

Local's and Holiday Tours

Specialising in School holidays and education!
The Famous Port To Port

- Quarantine Island Treasure Hunt

-Touch Tank Tours

-Mini Harbour Tours and much more!

Return after approx 25 mins, or up to 2 hours.

-Heated cabin, in and outdoor viewing, bathroom onboard-
GO ONLINE, OR ASK ONBOARD FOR PRICES & TIMES



www.porttoport.co.nz

020 416 24250

Beau & Co Dog Adventures

For dogs who live on Otago Peninsula

We offer a full range of services to keep your furry friends happy and cared for, including:

- Individual walks
- Off-lead pack adventures
- Small group sensitive dog outings

Whether you're looking for a one-off session or ongoing care, casual and forever clients are always welcome!

Why choose Beau & Co?

- Vet nursing student
- Canine first-aid trained & qualified
- Fully insured & registered
- 30+ years of professional experience

At Beau & Co, your dog's happiness, safety and wellbeing are our top priorities. Let us treat your pup like one of the family!

Contact Jamie to learn more or make a booking!

021 293 0753

<https://www.facebook.com/Beauandco2021>

<https://www.instagram.com/beauandco21/>

Local – the smart choice.



Lydia Dickson

027 454 5213

lydia.dickson@tallpoppy.co.nz

Tall Poppy
REAL ESTATE

Quarantine Island/Kamau Taurua Community Inc.

Kia ora koutou,

Over the past few months on the island, the grass and weeds have continued to grow at rapid speed, much more than previous years due to the continued wet weather. It's been a poor breeding season for the Tara/white-fronted terns and Kawaupaka/Little Shag who nest on the island who seem to have been affected by the flooding in October and the continued rain. Yet the silver lining is our native seedlings are flourishing and have not needed watering very much, usually a key job for our volunteers over the summer months.

Island Keeper, Jon Clark, has been kept busy mowing and weed eating paths and hosting a number of groups choosing to stay a night or two in St Martin Lodge. Students from Macandrew Bay School, South Otago High School, St. Kevins College, James Hargest College, Taieri College and Kaikorai Valley College all enjoyed an overnight stay. There has been a steady number of groups of families and friends enjoying some island time over the holidays and others celebrating a birthday. W.E.E. (Women's Empowerment Experience). Treat returned in November, and Dunedin Zen Group and SHE Choir also held retreats in December, and former Syrian refugee families enjoyed a holiday in early January.

Day visitors included Anne Montgomery-Lee, a descendant of Nicholas (Nicola) Azzariti, who has been researching the history of her great-great grandfather and the mystery of why Nicola and Susan (nee Cope)'s first child (Baby Azzariti) is buried on Quarantine Island on 27 October 1875 (born and died the same day). Nicola was one of a small group of Italian fishermen who immigrated to New Zealand and settled in Port Chalmers in the 1870's and Deborah Bay after that. Through Anne's genealogy research, she discovered the first record of Nicola, when he married Susan Cope (Azzariti) on 14 December 1874 in the Registry office, Dunedin.

Our regular weekend mahi volunteer days and Welcome Day's have been enjoyed by a few new visitors and regular volunteers/Community members. On our Welcome Day held on 23rd November we were joined by members of the Botanical Society of Otago and the Burns Reserve Trust. Mahi in December and January has focussed on path and track maintenance especially the bush loop track. We have installed additional signage at both entrances to the loop bush track to caution increasing numbers of day visitors that the track is slippery, muddy, steep and uneven in places, and that suitable footwear and moderate fitness are required. Other mahi included weed control, releasing seedlings, maintaining and monitoring predator traps and tracking tunnels, the final spring bird counts, the start of our lizard surveys, leading tours of the island, Lodge cleaning, and building maintenance.

Following the GPR (ground penetrating radar) survey of the cemetery in July 2023, Matt Schmidt, Senior Heritage Advisor, Department of Conservation, secured funding for the cemetery fence to be realigned. Although the survey didn't identify any graves outside the cemetery, Emma St Pierre, the archaeologist leading the survey, suggested the current fence line is sitting on top of or very close to burials and recommended the fence line be moved out by 1-1.5m to capture these burials. Paul Clements is leading this mahi.

Thanks to all our volunteers and Community members for their efforts on and off the island over the last few months.

We are grateful to the Resene Colour Your Club competition for paints and accessories plus a Prezzy card for our volunteers. Special thanks to Bill Boes for shearing the island hipi/sheep in early December and Brendan and Jess Penwarden for donating six hipi/sheep from their flock. They were transported to the island in early February. Thanks also to Port-To-Port Cruises and Wildlife Tours, East Coast Charters and Otago Water Taxis & Tours for boat transfers.

If you'd like to visit or stay on the island, as a family group, or group of friends, or for a retreat or workshop venue, also see our website quarantineisland.org.nz for details. You can also subscribe to our monthly e-newsletter to learn about island news, events and volunteer opportunities, or follow our Facebook page Quarantine Island Kamau Taurua (Quarantine Island) and/or Facebook Group QI/KT Community Group, or Instagram page [quarantineislandkamautaurua](https://www.instagram.com/quarantineislandkamautaurua), or contact the island Keeper (Resident Manager) Jon on 021 082 58619 or email quarantineisland@gmail.com.

If you haven't visited before, we host a Community Welcome Day on the last weekend of each month. Just a short boat ride from Back Beach, Port Chalmers, or Portobello pontoon by arrangement. We organise boat transport. Details and registration forms for events are on our website or posted on our Facebook and Instagram pages.

There is something for everyone on Kamautaurua/Quarantine Island. From relaxing and recharging in solitude and peaceful surroundings, to learning about Island history and ecology, volunteering, and experiencing what makes the Island so special.

Saturday 22 February & 29 March - **Welcome Days**. Volunteer, relax or explore, or all three! Come for the day or stay overnight! See our website 'Events' page or social media for details, dates of Mahi Days, or to join our Volunteer Database.



Otago Peninsula Massage

Katherine Cooke

Katherine is a very experienced therapist who has treated hundreds of people from all walks of life. She is passionate about helping people become pain free through massage therapy and will work with you to achieve your mobility goals.

SERVICES

HALF HOUR

Half hour appointments are for repeat treatments of single limb or joint injuries.

FULL HOUR

Full hour appointments are for any back or neck pain and for multiple injury sites.

FIRST APPOINTMENT

Your first appointment will be for a full hour. A history will be taken, Katherine will assess and treat you within this appointment.

Email or phone today to book an appointment.

otagopeninsulamassage@gmail.com

0274783337



Otago Peninsula Massage
0274783337

Experienced remedial massage therapist

Tai Chi

Steady As You Go®



Steady As You Go®

Portobello

Coronation hall, Portobello Rd

Monday: 10am

Steady As You Go®

Macandrew Bay

Bowling Club, Portobello Rd

Friday: 1.30 pm



Tai Chi

Broad Bay

Broad Bay Hall, Clearwater Street

Wednesday: 9.30am



For more information

Margaret

P 03 479 3052

E margaret@ageconcernotago.co.nz



**AGE
CONCERN
OTAGO**
He Manaakitanga
Kaumātua Aotearoa

Improve your balance, strength, fitness and mobility!

DIANE DUPRES: PRESENT MOMENT

YOGA CLASSES

Start your yoga journey today



EVERY WEDNESDAY 5:30PM

All shapes, sizes and
abilities welcome
\$15.00 per session

Portobello Bowling Club

SHANE CROSS & SON GIB STOPPING



Shane : 022 122 8332

Michael : 022 320 3440



- Renovations
- Gib Cove
- Skim Coating
- Fibrous Plastering
- New Builds
- Gib Fixing
- Bathrooms
- Kitchens
- Dustless Sanding

Over 30 years experience No Job too small!



shanecrossplastering@gmail.com








Another Day In Paradise—from Olly's Pen

Kia ora! Gee I haven't seen anyone else since last year? Oh well, it's 2025, all is well as far as I can see and if there's anything I am learning as I get older it's this: It's not what happens to you that's important – it's what you do about it. Some people spend most of their time complaining about this and that and really all they do is get themselves all worked up and angry at everything. Such people I find are difficult to be around. Whenever somebody in my circle starts down that road, I try my best to change the subject to something positive without sounding preachy (if there is such a word). I love being around people who are enjoying life and appreciating everything around them. Every day without fail, I write in my two journals. One's a daily diary into which I record the day, the month and the year and then jot down something interesting I might have thought up; an idea for a poem, a song or a book or maybe a wonderful experience I had such as looking breathlessly at a wonderful sunrise or sunset; or jotting down an enjoyable experience. Like what happened the other day when I was privileged to have the company of a tūi who perched close by me on our apple tree at the back of our section and sang its heart out.

Then it hopped onto the rim of the large basin at the base of our fountain, which is a statue of a woman pouring water from a jar perched on her right shoulder, bathed there for a few moments and then after fluffing and shaking its feathers, which I assumed was it drying itself out, it flew off into a tree further away. I thanked it and felt truly blessed. Every day I always find something to really appreciate – things I've taken for granted because they've always been there...like the flowers in our garden, the trees, the shrubs and the wonderful fragrances that waft up now and then especially on a warm balmy day. I've taken the time to learn the names of all of the plants and in doing so, find that I enjoy my surroundings much, much more nowadays. Love and appreciation always radiates positive energy. And I reckon the plants, the animals and everything whether it's inanimate or animate, feels the same. At least I know I do. I love this piece of paradise, which I believe we are all shaping and affecting. And for that I am truly thankful.

— Olly Ohlson

<p>NEW LISTING</p>  <p>Broad Bay 23 Solar Terrace By Negotiation</p>	<p>FOR SALE</p>  <p>Portobello 936 Harington Point Road</p> <p>FOR SALE</p>  <p>Portobello 928 Harington Point</p>	<p>FOR SALE</p>  <p>Portobello 2 Treetop Drive</p> <p>SOLD</p>  <p>Portobello 926 Harington Point</p>
--	--	---



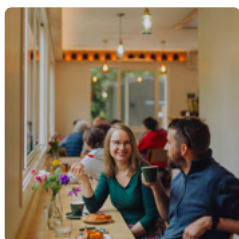
NO. 1 BAYLEYS DUNEDIN SALES PERSON FEBRUARY 2024
NO. 1 BAYLEYS DUNEDIN SALES PERSON 2019 - 2023
TOP 5% OF BAYLEYS SALES PEOPLE 2020 - 2023

Alice Munro 027 929 1174
 alice.munro@bayleys.co.nz
 bayleys.co.nz Licensed under the REA Act 2008





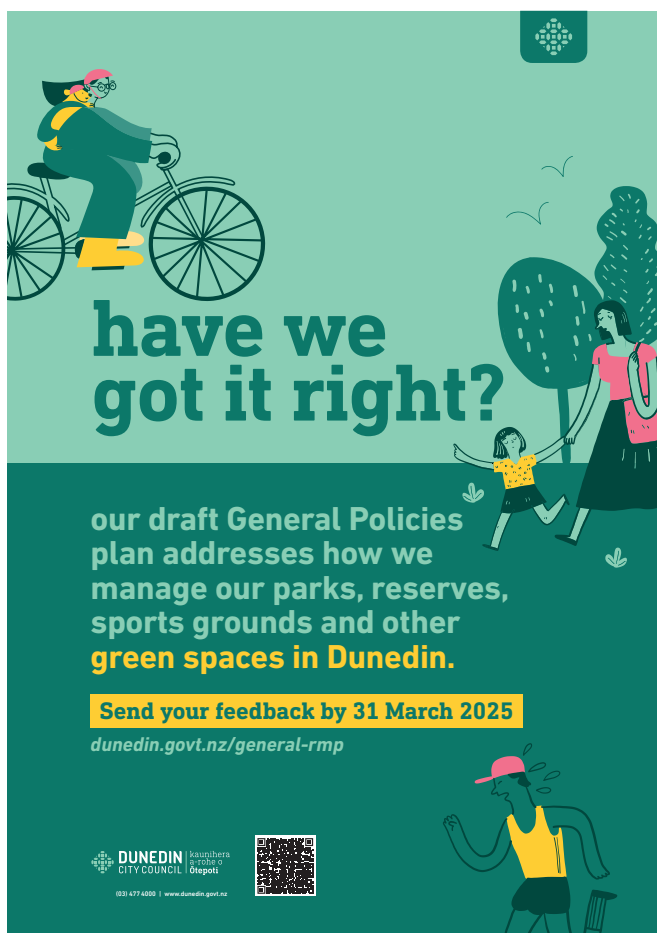

TASTE OUR LATEST PRESERVES, FRESH FROM THE AUGUSTINES KITCHEN. ENJOY SEASONAL DISHES, FRESH PASTRIES, OR SIMPLY GRAB A COFFEE AND TAKE A STROLL.



WE LOVE WELCOMING YOU ON FRIDAYS FOR LOCALS DAY—
NO BOOKINGS NEEDED, JUST WALK IN!

OPEN: FRIDAY - SUNDAY 8:30AM-2:30PM
33 HERWEKA STREET, 9014 PORTOBELLO

BOOK NOW (WE TAKE RESERVATIONS ON WEEKENDS):
WWW.AUGUSTINESOFPORTOBELLO.COM
@AUGUSTINESOFPORTOBELLO (SOCIAL MEDIA)



have we got it right?

our draft General Policies plan addresses how we manage our parks, reserves, sports grounds and other **green spaces in Dunedin.**

Send your feedback by 31 March 2025

dunedin.govt.nz/general-rmp

DUNEDIN CITY COUNCIL | **kaunihera o ōtago**

03 477 6000 | www.dunedin.govt.nz



For all your legal advice on:

- Land Sales and Purchases
- Wills and Estates
- Trusts and Asset Planning
- Agribusiness and Rural
- Banking and Finance
- Leases
- Enduring Powers of Attorney
- Relationship Property



Robert lives on the Peninsula and has an office in central Dunedin. Local appointments are welcome.

Phone: 03-470-1352 **Mobile:** 027-630-6263
Web: www.robertwilsonlaw.co.nz

portobello area community resources

BOOK A LOCAL HALL

- **Coronation Hall**, Portobello
Wayne Cameron – 4780 424
- **Scott Hall**, Harwood
Dave Rogers – 027 696 9657
- **Hoopers Inlet Hall**
Jackie Clearwater – 4780 508
Hoopersinlethall@gmail.com
- **Broad Bay Community Centre**
See www.broadbay.co.nz for info

PORTOBELLO LIBRARY

The Library is open on Thursdays and Sundays, 11am–1pm. You can find the library in the Coronation Hall, Portobello. If you are wanting to join, it costs \$5.00 per family, and nothing thereafter except for 20 cents per book to take home.

BOOK BUS

The Dunedin Public Library Book Bus visits the Peninsula every Wednesday. At Portobello School 9:45–10:15, in front of the pub 10:15–11, and at Broad Bay School at 11:15–11:45.

PENINSULA TOY LIBRARY

Our Toy Library is open every Sunday morning from 10:30–12:30. We have a wide variety of toys, puzzles, games, dress-ups, and ride-on toys. At the Portobello Domain Pavilion, 11 Allans Beach Road.

BADMINTON CLUB

Badminton Club plays Sundays at 7:00pm, Coronation Hall. new members very welcome—come along and give it a try! We have club rackets for new players to use. Any enquiries phone Geoff on 0275 784 758.

PENINSULA MEDICAL CENTRE

12 Allans Beach Road, Portobello
4780 880

LOCAL PHONE BOOK

478 Local Phone Books are available for purchase at the Portobello Store for \$10.

PORTOBELLO PRESBYTERIAN CHURCH

All are welcome to our friendly little church on the Peninsula. 22 Harington Point Road, Portobello. Services every other Sunday at 10:00am.

DEFIBRILLATOR

There are Automated External Defibrillators located outside Portobello Store (1 Harington Point Road), the Broad Bay Boating Club (683 Portobello Road), and Scott Hall, (54 Harwood Street, Harwood).



HOT WATER URN RENTALS

We have two 20 litre Water Urns available for community use. If you wish to use these for an event, email pbocomm.inc@gmail.com. All we ask for is a donation.



POOL

The Portobello School community pool is open through March. Family keys are sold out. Please remember to return all keys at the end of the season.

community calendar

Sustainable Otago Peninsula community meetings will be held throughout February and March. See Page 9 for details.

Wednesday 19 February
Portobello Community Inc.
Monthly Meeting
Biodiversity Hub, 7:30pm

Saturday 22 February
QIKT Welcome Day
Quarantine Island Kamautaurua

Sunday 23 February
Rural Skip Day
Portobello Domain, 10-5

Thursday 6 March
Portobello Library AGM
Coronation Hall, 1:30pm

Wednesday 19 March
Portobello Community Inc.

Monthly Meeting
Biodiversity Hub, 7:30pm

Saturday 29 March
QIKT Welcome Day
Quarantine Island Kamautaurua

Sunday 30 March
Portobello Market Day
Coronation Hall, 10am-2pm